



**Welcome to
#thecareercollege**

THE CORNWALL COLLEGE GROUP



**CAREERS & COURSES
GUIDE 2022
FOR SCHOOL LEAVERS**



DUCHY
COLLEGE



BICTON
COLLEGE

WELCOME

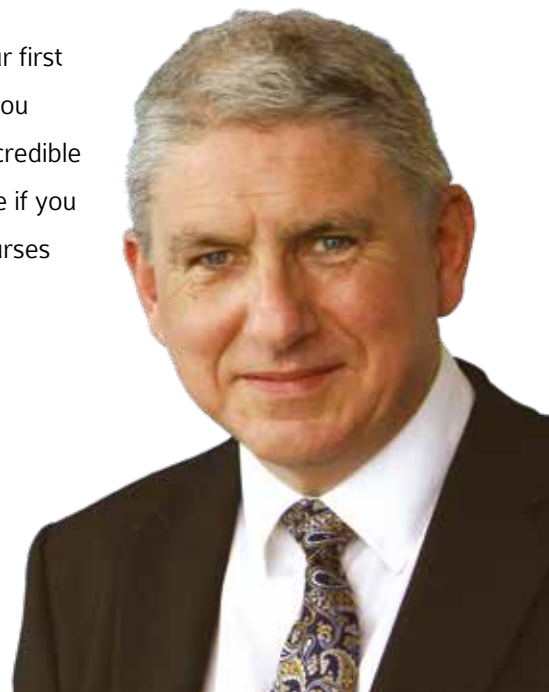
Welcome to The Cornwall College Group and thank you for considering the incredible opportunities that await you at one of our fantastic campuses. I'm sure as you explore the prospectus, like most people, you will quickly realise why we are also known as 'The Career College'.

Our mission is to provide exceptional education and training for every learner to improve their career prospects. We know that your future success needs more than just a certificate. It requires a meaningful and engaging course that has been developed alongside employers. Our courses ensure you have all the skills and experience required for you to secure that rewarding career or progress onto higher qualifications.

The great news is there has never been a better time to study with us. We have invested heavily in our campuses, our teaching and our student experiences. A passion for learning, training and rewarding careers can be felt on every campus in our Group. Our incredible story is receiving positive local and national attention and we would love for you to be part of this.

All you have to do is choose the course and campus for you, and take your first steps towards a bright and successful future. I would highly recommend you follow us on our social media channels to get a flavour of our students' incredible experiences and wonderful achievements. And we are always contactable if you have any questions or would like to book onto an event to explore our courses and campuses. I am looking forward to meeting you very soon.

John Evans
Principal and Chief Executive
The Cornwall College Group



Choose THE CAREER COLLEGE

If you're in your last year of school, or thinking of your next steps, then the book you're holding has been designed just for you.

Think of it as a guide to the huge range of career pathways you could choose when your time at school comes to an end.

We get it. Choosing the right course to do at college isn't easy, but we've got you covered.



**#1 FOR
APPRENTICESHIPS IN
CORNWALL AND DEVON**

On the pages that follow, you'll find all the information you need to help make this important decision, as well as the steps to take to get you closer to your dream career.

With both full-time study and apprenticeship options available across a wide choice of careers, there really is something for everyone.

Enjoy the search!



**SPECIALIST
MILITARY ACADEMY**



**OVER 1,200 ACRES
FOR LAND-BASED
TRAINING**



**INDUSTRY PARTNERS
TO ENSURE COURSES
STAY RELEVANT**



**THE FUTURE OF
AGRICULTURAL RESEARCH
& EDUCATION**

WHAT'S INSIDE?

COME SEE FOR YOURSELF...

Find out about visiting one of our campuses at the various events we hold throughout the year.

4

EXPLORE YOUR OPTIONS

Let's take a look at the different routes available to you after finishing your GCSEs.

6

WHAT DO I NEED?

Find out information about selecting the right level of course for you, as well as the entry requirements you'll need to begin.

8

HOW DO I APPLY?

This handy, step-by-step guide will show you exactly how to apply to study with us.

9

OUR CAMPUSES

Take a tour of our amazing campus facilities. Which one is right for you?

10

AGRICULTURE & COUNTRYSIDE MANAGEMENT

We have over 100 years' experience in providing award-winning education to drive the rural economy.

16

ANIMAL MANAGEMENT & VETERINARY NURSING

Explore the world of animals, with our range of courses that can lead to degree study and a range of careers.

22

ENGINEERING, PLANT OPS & CONSTRUCTION

Engineering is one of the UK's most important industries. Get your start with us.

28

EQUINE

For anyone with a passion for horses, our industry-leading courses will give you the right start for a dream career working in the equine industry.

32

FOUNDATION LEARNING

Pathways to develop independence and confidence in preparation for adulthood.

36

HORTICULTURE, FLORISTRY & ARBORICULTURE

Our beautiful rural campuses are hard to beat for anyone looking to study the natural world.

40

MILITARY & PROTECTIVE SERVICES ACADEMY

Discover what you're truly made of and get the best start for a career in either the blue light services, armed forces or protective sector.

46

SPORTS & FITNESS

Step up your sporting journey with our amazing range of courses, training and facilities.

50

VOCATIONAL ACADEMY

Need some time and support before committing to a specific course to study? Our Vocational Academy is for you.

54

WHAT IS AN APPRENTICESHIP?

Want the chance to learn and get a qualification whilst you work? An apprenticeship could be for you.

58

SUPPORTING YOU

Find out how our teams will help you to achieve your goals during your time studying with us.

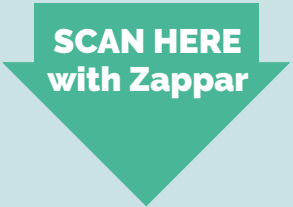
60

If you require any part of this guide in a larger or an alternative format, please contact Student Services on 0330 123 2523.

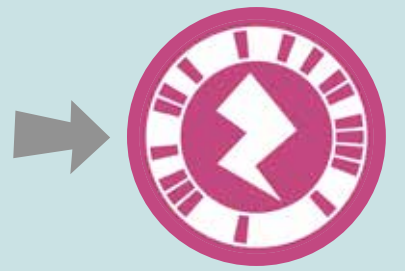
This prospectus contains information believed to be correct at the time of printing. It is possible that information may change for various reasons. The Cornwall College Group reserves the right to withdraw or amend any course listed in this prospectus at any time.



ZAPPAR CODES



Throughout this careers and courses guide you will see this symbol. Follow these instructions to unlock introductory videos, campus tours, former student profiles and more.



Please note Zappar is more responsive when connected to Wi-Fi.

COME SEE
FOR YOURSELF...



OPEN EVENTS

A great place to start! Get all the info you
need to find your dream career

Find out more: bicton.ac.uk/events
duchy.ac.uk/events

Bicton College

Sat 20 Nov 10am - 12pm
Sat 5 Feb 10am - 12pm
Sat 26 Mar 10am - 12pm

Duchy College Stoke Climsland & Rosewarne campuses

Sat 27 Nov 10am - 12pm
Sat 29 Jan 10am - 12pm
Sat 19 Mar 10am - 12pm

See world-class facilities

Explore career pathways

Discover more about our unique field trips

Hear from expert lecturers

Tour the campuses

Get advice on filling in your application form

Receive transport and finance information

Apply for apprenticeship jobs

TASTER DAYS

Give it a try! We offer taster days throughout
the year for a more hands-on experience

Book your place:
duchy.ac.uk/events
bicton.ac.uk/events



FUN DAYS

We work hard, we play hard!

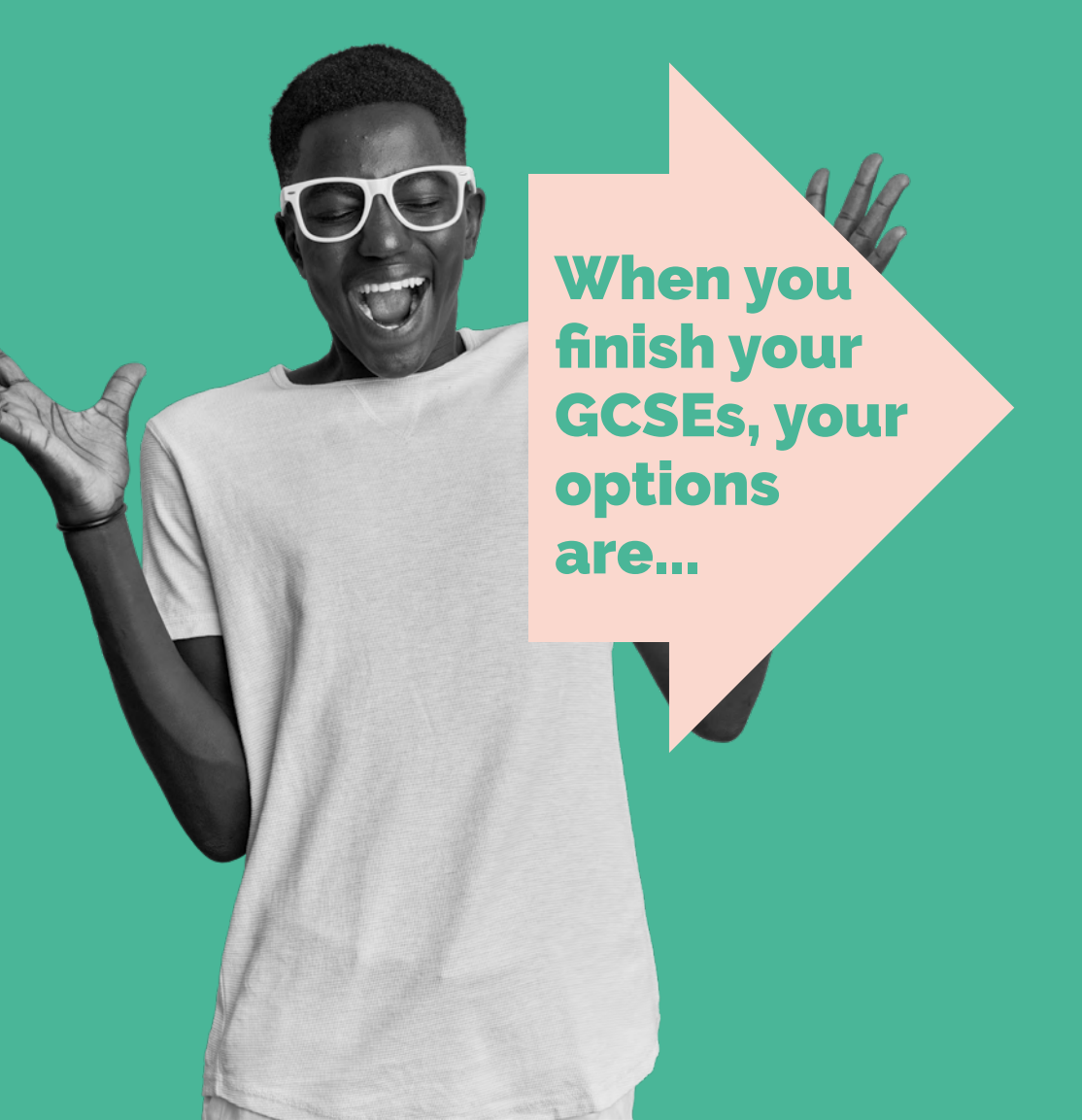
BICTON LAMBING SUNDAY
Sun 20 Mar

**DUCHY COLLEGE STOKE
CLIMSLAND FAMILY FUN DAY**
Sun 26 June

**DUCHY COLLEGE ROSEWARNE
FAMILY FUN DAY**
Sun 19 Jun

For more info visit:
bicton.ac.uk/events
duchy.ac.uk/events





When you
finish your
GCSEs, your
options
are...

Do I have to pay for my course?

After GCSEs you are able to access three-years of full-time study free of charge. Apprenticeships can be started at any age (if you are 19+, this still won't cost you, but your employer will have to contribute to apprenticeship fees).



START YOUR CAREER NOW WITH AN APPRENTICESHIP



If you know the career route you want to follow, why wait? You can start your career now with an apprenticeship programme, where you can:

- Earn a real salary
- Learn skills in the workplace
- Train with a workplace mentor and our experienced team of college tutors
- Get qualified and improve your future earning potential!

We have a recruitment team to help you get started. Our advisors will help you with applications, CV writing and provide you with interview guidance to help you stand out from the crowd.

Throughout your apprenticeship you will have the support of your college tutor to ensure your learning is on track and an apprenticeship advisor who will visit you at work and make sure you are happy and thriving in the workplace.

Apprenticeships can also take you higher, with a range of new Higher Apprenticeships now available, you may be able to continue your apprenticeship on to degree-level. Many apprenticeship programmes also offer UCAS tariff points giving you the chance to go on to university if you want to later in life. Apprenticeships can also lead on to further professional qualifications that could advance your career.

If you are applying for an apprenticeship you need an employer who is willing to take you on as an apprentice. If you don't have an employer please speak to the recruitment team.

0330 123 4785
apprenticeships@duchy.ac.uk
duchy.ac.uk/apprenticeships

PREPARE FOR YOUR CAREER WITH A QUALIFICATION AND REAL WORK EXPERIENCE



Our full-time study programmes offer qualifications, work experience and work competencies, which give you a great start to your career.

We believe that the purpose of education is to prepare you for a successful working life, which goes beyond qualifications. At the career college we want to give you the edge you'll need for your chosen career.

We will help you gain industry relevant skills through work experience, build your confidence and life skills through our work competencies programme and give you specialist subject knowledge and qualifications through your time with us.

Work experience

All of our courses have a work experience element and this is where you will gain insight into possible future careers and immerse yourself in real work; on your CV this will show future employers you are work ready. Some programmes also offer 350 hours of industry placement.

Work competencies

We prepare you for the workplace by helping you develop work ready skills which include punctuality, reliability, meeting deadlines, communication, resilience, problem solving, innovation, financial acumen, planning, prioritising and much more.

Specialist knowledge

We have strong partnerships with employers who help shape the curriculum, to make sure your training is relevant, giving you an edge when you start your chosen career.

Skills to business

It is a requirement for all 16-18 funded Study Programme learners to undertake a Work Experience Placement with a relevant local employer for a minimum of one week.

Work Experience and Industry Placements offer an exciting opportunity to enhance your skills and knowledge. You will understand first-hand the sector you're interested in, get ready to work and open up a world of employment opportunities after college.

Inclusive work experience

At The Cornwall College Group, we offer inclusive work experience in different areas across our campuses. We're proud to help students who aren't quite ready to enter the world of work develop their behaviours and industry-specific skills.

All inclusive placements have job descriptions with bronze, silver and gold tasks to work towards. At all stages, our work experience team review the placement to see whether a student is ready to progress. Whether this be to a group external placement, supported by the college, working with local employers, or to the end goal of an independent work placement.



COURSE LEVELS AND ENTRY REQUIREMENTS

It is important to choose the correct level of course after your GCSEs. Making the right choice will depend on meeting the entry requirements, how you like to study and what you would like to do after.

Please use the table below as a general guide to our entry requirements. Acceptance on a course will also depend on a successful interview.

Course Level	Study Options	Typical Entry Requirements	Progression
ENTRY LEVEL	Entry Level qualifications.	No formal qualifications are required for Foundation Level courses.	Next Entry Level or Level 1 course.
LEVEL 1	Level 1 qualifications, including Certificates and Diplomas.	Two or more GCSEs at grade 2 or above, or successful completion of Entry Level qualification.	Level 2 course, Apprenticeship or employment.
LEVEL 2	Level 2 qualifications, including Diplomas and Apprenticeships.	Three or more GCSEs at grade 3 or above, or successful completion of a relevant Level 1 qualification. *see note below reference apprenticeships	Level 3 course, Apprenticeship or employment.
LEVEL 3	Level 3 qualifications, including Diplomas, Apprenticeships and T-levels. Note: Our programmes are delivered as two one year courses; Year 1 - Diploma, and Year 2 - Extended Diploma.	Four or more GCSEs at grade 4 or above including English and/or maths, or successful completion of a relevant Level 2 qualification. *see note below reference apprenticeships	University study, an Apprenticeship or employment.
LEVEL 4	HNC. First year of a Foundation Degree or first year of an Honours Degree. A Higher Apprenticeship.	A relevant Level 3 qualification (e.g. BTEC, A-levels), certain GCSE grades may also be required. *see note below reference apprenticeships	Further study at university, a Higher Apprenticeship or employment.
LEVEL 5	HND. Final year of a Foundation Degree. Second year of an Honours Degree. A Higher Apprenticeship.	Progression from Level 4. A relevant Level 3 qualification, certain GCSE grades may also be required.	Further study at university or employment.
LEVEL 6	Final year of an Honours Degree. Top-up Degree. Degree Apprenticeship.	Progression from Level 5. A Foundation Degree will be required for top-up degrees.	Further study at university or employment.
LEVEL 7	Postgraduate Study, PGCE, MSc, MA, PhD.	Undergraduate Degree.	Employment.

Please note

- *For any applicants considering undertaking an apprenticeship, you will need an employer willing to take you on as an apprentice, which is a process that we can support you in. With regards to entry requirements, please note that prior to starting an apprenticeship you will need to complete an initial assessment in English and maths, so that we can establish the level you are currently working at. We will then run through a Skills Scan with you, in order to determine your current level of knowledge and skills in your chosen area of study. Both of these elements will then be used to determine the level of apprenticeship which is most suitable for you to start at, irrespective of grades awarded in previous qualifications.
- Some specialist courses may have extra entry requirements, please see website for details.
- If you do not achieve your expected grades please do not panic. Contact us and we will help you find an alternative course, normally in the same subject area of interest.

GCSE GRADES

GCSE GRADES UPDATE

In 2017 the grading system for GCSE English and maths changed significantly. Rather than being graded A* to G, a numerical system is now used. The grades now run from 1 to 9, with 9 being the highest. A grade 4 is now a ‘standard pass’, equivalent to a grade C, with a grade 5 being a ‘strong pass’.

GCSE ENGLISH AND MATHS

According to the Department for Education, gaining a grade 4 or higher in English and maths could potentially add £2,000 to your salary every year. If you have not yet gained a grade 4 in GCSE English and maths then you will carry on studying these subjects as part of your Study Programme at college. Our English and maths teams are committed to helping you succeed, and we offer a different and more personalised experience than school.

Our GCSE courses run from September until June, giving you the chance to gain your qualification in just one academic year.

Not quite ready for GCSEs yet? Don’t worry, we have a range of ‘stepping stone’ qualifications in English and maths meaning that you can improve your skills at your own pace. If you have already gained your GCSE English and maths at grade 4, we will continue to embed English and maths into your specialist course, as these skills are essential for your future employment.

When you join us, we will assess your current levels of English and maths, and use your existing qualifications to make sure that you are on the right course for you.

HOW TO JOIN US

We make it as easy as possible to apply to study with us. Our team of advisors will talk you through your options and recommend the right programme and level to start at. You will then get the chance to meet the course tutor in an informal interview to talk in-depth about your application and aspirations. Here is our simple guide to applications. Please note that during this process you may receive phone calls from a withheld number.

1.

APPLY FOR COURSES

anytime throughout the year, it’s ok to change your mind.

2.

YOU’LL GET A SPECIALIST ADVISOR

who will talk you through the process and answer questions.

3.

WE’LL GIVE YOU YOUR INTERVIEW DATE

to meet the tutors and see where you’ll be studying.

4.

YOU’LL RECEIVE AN OFFER

for the right course for you (this may be based on you gaining certain GCSE grades).

5.

ACCEPT YOUR OFFER

as soon as possible and reserve your place (you can still change your mind).

6.

APPLY FOR TRANSPORT TO COLLEGE

before the end of July (it may be free); our team can help with this.

7.

CALL US AND LET US KNOW

your results on GCSE results day.

8.

WE’LL CONFIRM YOUR PLACE

on the course and send you all the information you need for the start of term.

If you are applying for an apprenticeship you need an employer who is willing to take you on as an apprentice. If you don’t have an employer please speak to our dedicated Apprenticeship Recruitment Team apprenticeships@cornwall.ac.uk or call 0330 123 4785



Discover... BICTON COLLEGE



Plants, Flowers and Trees

Our horticulture, floristry and arboriculture facilities are located in 200 hectares of green parkland and rolling countryside.



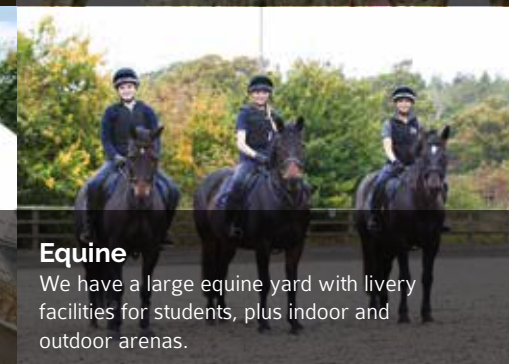
Military & Protective Services

Our specialist academy staff will train you for a career in the armed forces or protective services.



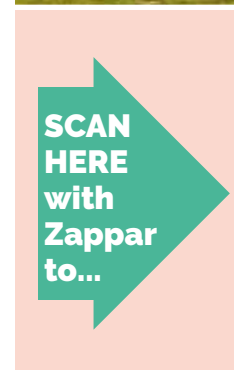
Home Farm

Our farm is run commercially and provides state-of-the-art resources for education and practical training.

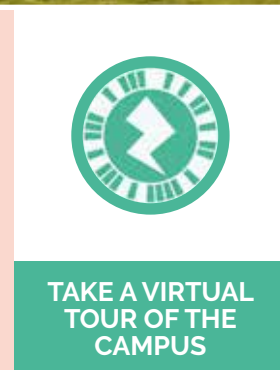


Equine

We have a large equine yard with livery facilities for students, plus indoor and outdoor arenas.



SCAN
HERE
with
Zappar
to...

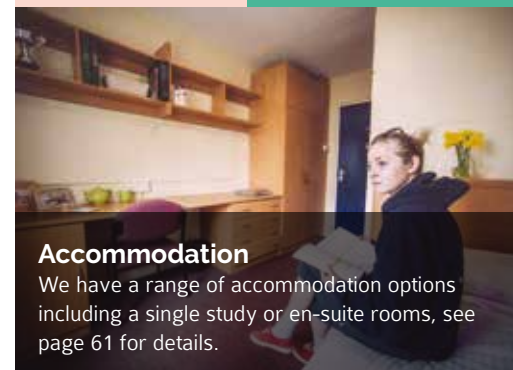


TAKE A VIRTUAL
TOUR OF THE
CAMPUS



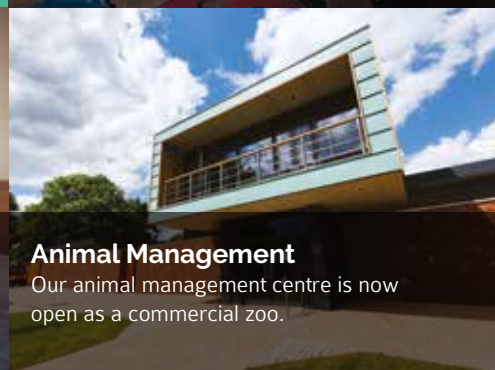
Agricultural Engineering

Our engineering and heavy plant machinery workshop has excellent facilities.



Accommodation

We have a range of accommodation options including a single study or en-suite rooms, see page 61 for details.

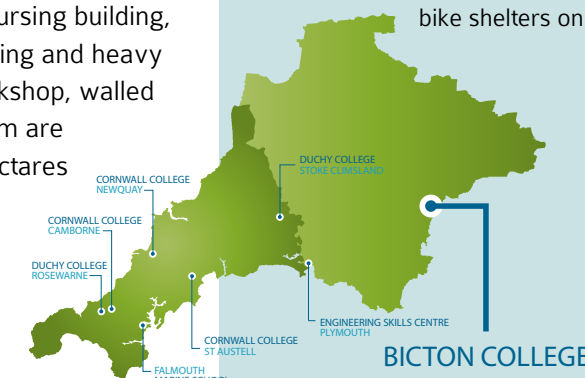


Animal Management

Our animal management centre is now open as a commercial zoo.

Bicton College is based in East Devon, near Exeter, and set in an Area of Outstanding Natural Beauty, just two miles from the Jurassic Coast. The historic Georgian mansion, commercial farm, animal husbandry school, modern veterinary nursing building, world-class engineering and heavy plant machinery workshop, walled garden and arboretum are all set in over 200 hectares of historic parkland.

Transport
An extensive transport network covers towns and villages across Devon. The campus is 20 minutes from the M5 motorway, 25 minutes from Exeter and 10 minutes from Exmouth. Our funding and transport team are on hand to advise you. We also have bike shelters on campus.



BICTON COLLEGE



Discover... DUCHY COLLEGE ROSEWARNE



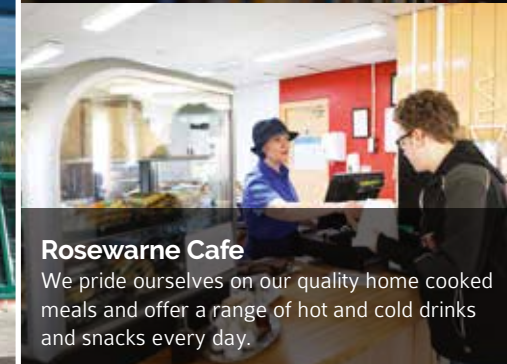
Learning Centre

A dedicated library and study area with PCs and laptops for you to use with free Wi-Fi.



Agriculture

We specialise in delivering agricultural apprenticeships working with local employers.



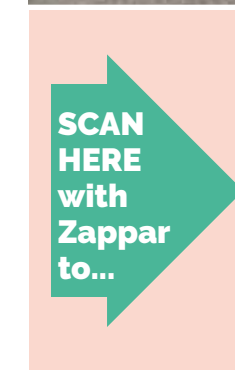
Rosewarne Cafe

We pride ourselves on our quality home cooked meals and offer a range of hot and cold drinks and snacks every day.

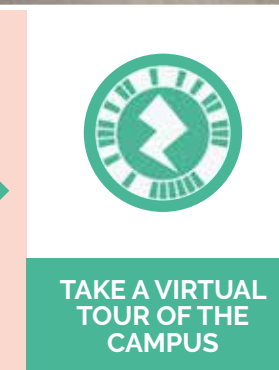


Animal Management Centre

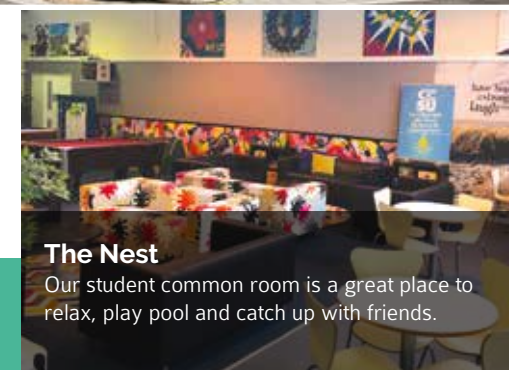
Our purpose-built centre houses a wide variety of species giving you plenty of opportunity to get hands-on.



SCAN
HERE
with
Zappar
to...



TAKE A VIRTUAL
TOUR OF THE
CAMPUS



The Nest

Our student common room is a great place to relax, play pool and catch up with friends.



Working Nursery

Our well-established working wholesale nursery supplies garden centres across Cornwall, as well as the Eden Project and the National Trust.



Veterinary Nursing Facilities

Study nursing science to degree-level; our facilities are state-of-the-art, the only one of its kind in the county.

Duchy College Rosewarne is situated just outside Camborne. The beautiful grounds are spread over approximately 47 hectares and are an excellent horticultural resource with national plant collections. The campus also has a dedicated animal management centre, dog grooming facilities, micropropagation lab and working nursery and offers specialist courses in conservation and environmental sustainability, agriculture, animal management, countryside, floristry, horticulture and veterinary nursing.

Transport
The college has its own transport network that will collect you from a range of towns and villages from Penzance to Truro, Falmouth to St Ives. The campus has ample car parking and bike shelters.

DUCHY COLLEGE
ROSEWARNE





Discover... DUCHY COLLEGE STOKE CLIMSLAND



Learning Centre
A large library and study area with PCs and laptops for you to use with free Wi-Fi.



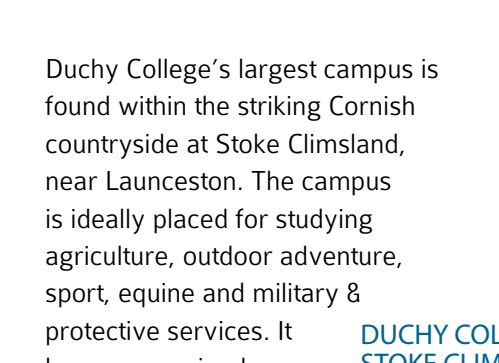
Animal Management
A dedicated animal management centre, with five animal paddocks and a dog grooming parlour.



Pastures Restaurant & Sam's Cafe
The campus restaurant has a hot food counter and snack shack open every day.



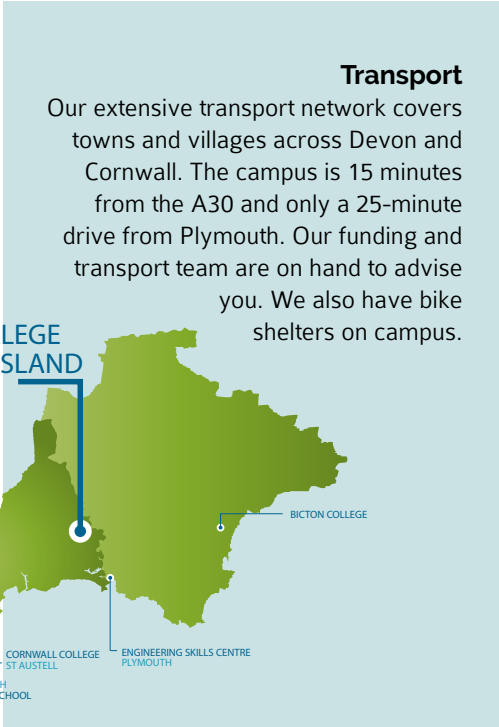
Accommodation
We offer halls of residence for learners who live too far away to commute every day, see page 61 for details.



Equine
We have a large equine yard with livery facilities for students on any programme, plus indoor and outdoor arenas.



Future Farm
A brand new £3.1 million investment in Future Farm, a state-of-the-art dairy research training and development facility.



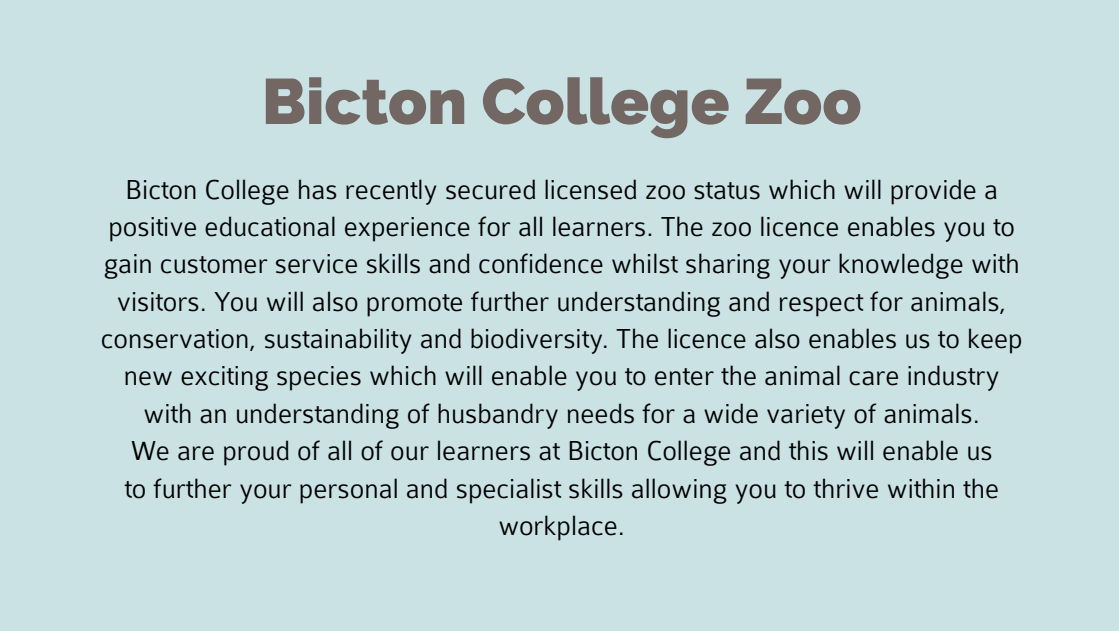
Transport
Our extensive transport network covers towns and villages across Devon and Cornwall. The campus is 15 minutes from the A30 and only a 25-minute drive from Plymouth. Our funding and transport team are on hand to advise you. We also have bike shelters on campus.



Sports & Outdoors
A range of facilities; a 10m climbing tower, sports hall and grass pitches, plus a fully equipped gym and golf swing studio.



SEE HOW WE'RE INVESTING IN YOUR FUTURE



Bicton College Zoo

Bicton College has recently secured licensed zoo status which will provide a positive educational experience for all learners. The zoo licence enables you to gain customer service skills and confidence whilst sharing your knowledge with visitors. You will also promote further understanding and respect for animals, conservation, sustainability and biodiversity. The licence also enables us to keep new exciting species which will enable you to enter the animal care industry with an understanding of husbandry needs for a wide variety of animals. We are proud of all of our learners at Bicton College and this will enable us to further your personal and specialist skills allowing you to thrive within the workplace.

Future Farm

Cornwall now boasts a major research and innovation dairy farm, Future Farm. Located at Duchy College Stoke Climsland, Future Farm is helping improve the efficiency, welfare and technological advancement in dairy farming. It's a huge benefit for the next generation of workers and leaders in the sector. Learners from across all of our land-based campuses will have access to state-of-the-art equipment, data and research tools to widen their knowledge, skills and behaviours. Future Farm is home to 220 cows that can be grouped into three mini-herds to research the latest innovations in dairy.

DUCHY COLLEGE AWARDED £1M TO SPEARHEAD NET ZERO FARMING PROJECT

More than 1,300 tonnes of
greenhouse gas saved with UK first
college renewable energy contract

College's eco agenda
praised as "innovative"
by senior minister

CORNWALL AT THE
FOREFRONT OF SUSTAINABLE
AGRICULTURE WITH DUCHY
COLLEGE'S FUTURE FARM

» The ecologist apprenticeship will involve weekly virtual lessons and four five-day residentials at the Eden Project over two years. Zara Fullbrook



Ecology apprenticeships are breaking new ground

by OLIVIER VERGNAULT
oliviervergnault@reachplc.com
@OliVergnault

THE UK's first ecological post-graduate degree apprenticeship course is being pioneered in Cornwall.

The course, set up by The Cornwall College Group (TCCG) in partnership with the Eden Project, will allow participants to secure a master's degree in ecological restoration and specialise in one of three ecological subjects while working full-time.

Dr Mark Nason, head of Eden Project learning, said: "This is a UK first and an incredible opportunity for businesses as well as students."

"The course has been designed in direct response to the demand seen

in such a hands-on industry – students can earn whilst they learn and employers will help create experts in the field whilst being seen to have a strong commitment to this vital sector."

Businesses interested in taking on an apprentice ecologist are being urged to attend a virtual event to find out how their firm could benefit – including how those that recruit before September will receive the £3,000 government bonus.

The "blended" nature of the level-seven ecologist apprenticeship being delivered by TCCG will involve weekly virtual lessons and four five-day residentials at the Eden Project over two years.

The course was created by 10 employers to combine expertise

in such a hands-on industry – students can earn whilst they learn and employers will help create experts in the field whilst being seen to have a strong commitment to this vital sector."

Dr Nason said: "A recent report from a committee of MPs said that a severe shortage of trained ecologists is hampering efforts by local governments to oversee biodiversity policies, with the committee recommending investment in training and skills as part of the Government's plans for green jobs. We're incredibly proud as a college to be positioning ourselves at the forefront of environmental education with a huge variety of courses covering biodiversity, conservation, ecology and sustainable agriculture."

Employers interested in taking part in the scheme are being invited

SUSTAINABILITY AT THE HEART OF YOUR COLLEGE

We hope when you arrive at college you realise very quickly how we are dedicating ourselves to securing the future of our planet.

Everyone has a part to play in achieving the long term sustainability of what we do, and we are determined to be leaders in this vital work.

SO FAR, WE HAVE:

1. Created a Sustainability Committee formed of students, staff, leaders and governors, that has the power to make real changes to the way we go about our work

2. Established new courses that lead to important and rewarding careers in the sustainability sector

3. Begun weaving a sustainability focus into all our courses

4. Audited our energy, waste, travel and many other operations within the Group, resulting in positive decisions such as switching our energy provider to one that only uses renewable energy

6. Added sustainability into one of our five core values so that it is woven into our every day practices

5. Launched Future Farm, which is leading research into cutting-edge sustainable farming techniques

7. Lobbied world leaders with highly regarded #heyG7 campaign

But this is just the beginning and we have much to do. We have a clear plan of how we want to achieve carbon net zero and then go further.

There are lots of exciting projects that are happening across our campuses, alongside new ways of working that will be introduced in the coming months.

It's vital to us that our students are involved in all these plans.

Luckily, we have a highly vocal and active student body, who have been championing the sustainability cause for some time, and we would love for you to be part of this exciting and important work.

We're looking forward to welcoming you to join one of our colleges as well as the Group's sustainability revolution.

SCAN
HERE
with
Zappar
to...



WATCH OUR
#HEYG7 STUDENT
VOICE CAMPAIGN

AGRICULTURE & COUNTRYSIDE MANAGEMENT

There has never been a better time to study agriculture and countryside management – and there is nowhere better to study it than on our campus in the countryside.

The industry offers some fantastic opportunities for skilled workers, technicians, managers and leaders of the future. There are some real challenges ahead, not least of which is to feed a rapidly growing world population and mitigate the impact of climate change. At Bicton College and Duchy College we enable you to gain the necessary skills and qualifications to help you succeed in life and we work closely with employers to reduce the skills gaps in the sector.

Our facilities are second-to-none with our own state-of-the-art research, teaching and training facility at Future Farm as well as hundreds of acres of working farmland and beautiful countryside for you to explore whilst you study.



Career opportunities in this section

FARM MANAGER
PEST CONTROLLER
ESTATE MANAGER
GAMEKEEPER
AND MORE...

Our industry partners & connections

HIGH GROUND

PENWITH LANDSCAPE
PARTNERSHIP

CH & RJ JORDAN AND SON

CREDITON MILLING

MOLE VALLEY FARMERS

RSJ CONSULTANCY

£120 billion

is what the farming and
agriculture industry contributes
to the economy each year



149,000

farming businesses are spread
across the UK employing over
four million people





I want a career in... AGRICULTURE

Agriculture makes a significant contribution to the economy in the South West of England and provides a wide range of exciting job opportunities. Our courses provide all of the skills and knowledge required for a successful step into the sector, regardless of whether or not you are from an agricultural background. We are the region's largest land-based education and training provider with our campuses located in the countryside.

Study Full-time

LAND-BASED STUDIES (AGRICULTURE) DIPLOMA LEVEL 1

Where: Bicton College and Duchy College Stoke Climsland
Entry Requirements: Two or more GCSEs at grade 2 or above, or successful completion of Entry Level qualification.

This one-year course is an ideal introduction into the land-based agricultural industry, where you will gain the hands-on practical skills, experience and knowledge of a variety of farming disciplines, designed to prepare you for employment. These include: safe working, farm animal husbandry, crop husbandry, tractor operation, fencing, and other estate skills.

Progression: Agriculture Technical Certificate Level 2 or Agriculture (Stockperson) Apprenticeship Level 2.

AGRICULTURE TECHNICAL CERTIFICATE LEVEL 2

Where: Bicton College and Duchy College Stoke Climsland
Entry Requirements: Three or more GCSEs at grade 3 or above, or successful completion of a relevant Level 1 qualification.

This one-year course covers general mixed agriculture including crops, livestock, tractors and machinery. You will be introduced to the fundamentals of plant, soil and animal science and how these influence the growth, yields and quality of our crops and livestock. You will examine how crops grow, how to plant them, how to look after them and how to harvest and store them. You will learn about the health, welfare, nutrition and reproduction of farm livestock and learn the basics of business management and farm profitability.

Progression: Agriculture Diploma Level 3.

Study Full-time

AGRICULTURE DIPLOMA LEVEL 3

Where: Bicton College and Duchy College Stoke Climsland
Entry Requirements: Four or more GCSEs at grade 4 or above, including English and/or maths, plus two sciences, or successful completion of a relevant Level 2 qualification.

Develop your technical knowledge and practical skills in order to gain a better understanding of the management of different agricultural enterprises and gain university entry. You will be learning from experienced agriculturalists both inside the classroom and on the College farm.

Progression: University study such as our FdSc Agriculture or employment in the industry.

Apprenticeship

GENERAL FARM WORKER LEVEL 2

Where: Bicton College, Duchy College Rosewarne and Duchy College Stoke Climsland
Entry Requirements: Three or more GCSEs at grade 3 including English and maths, as well as an employer willing to hire you as an apprentice.

As a general farm worker you could specialise in livestock or crop, and will assist with animal and plant health and nutrition, maintaining health and safety and biosecurity, and operating farm vehicles. Office work is minimal although basic daily record keeping will be required. You will be expected to undertake and pass a range of courses as part of this apprenticeship, including emergency first aid and the safe use and handling of pesticides.
Progression: On to a Level 3 Apprenticeship or a full-time study programme.

Apprenticeship

LIVESTOCK UNIT TECHNICIAN LEVEL 3

Where: Bicton College, Duchy College Rosewarne and Duchy College Stoke Climsland
Entry Requirements: Four or more GCSEs at grade 4 or above, including English and/or maths, or successful completion of a relevant Level 2 qualification.

A livestock unit technician is responsible for managing the livestock related tasks on a farm such as animal health and welfare from conception and birth through to the customer; and to support business productivity. The apprenticeship will develop your skills and knowledge enabling you to make key decisions to ensure the standards of health and safety, cross compliance, farm assurance, biosecurity and infrastructure security are met. You will usually only work with one species. The role will include the safe use and maintenance of farm vehicles, including the equipment used for transporting or producing feed. You will be required to understand, record and meet the business Key Performance Indicators that are set out by your employer.

You will be expected to undertake and pass a range of courses as part of this apprenticeship to include emergency first aid at work, safe use of veterinary medicines and the safe use of pesticides or safe application of pesticides using pedestrian hand held equipment.

Progression: University study such as our FdSc Agriculture or continue in employment in the industry.

CAREERS IN THIS INDUSTRY: FARM WORKER, FARM MANAGER, AGRICULTURAL SCIENTIST, AGRICULTURAL CONSULTANT.

Apprenticeship

CROP TECHNICIAN LEVEL 3

Where: Duchy College Rosewarne
Entry Requirements: Four or more GCSEs at grade 4 or above, including English and/or maths, or successful completion of a relevant Level 2 qualification.

As a crop technician you will be responsible for optimising crop/plant yields through establishment, management, harvest and post-harvest operations, while maintaining and improving the surrounding environment. You will also need to keep up-to-date with technological advances and new innovations. Being a crop technician requires self-motivation and the ability to work both independently and as a team player to complete tasks safely and efficiently. Many companies now use automation for a number of routine tasks, which will require technical skills to operate. This apprenticeship will develop your knowledge, skills and behaviours in core subjects before specialising in either soil based system or containerised systems.

You will be expected to undertake and pass a range of courses as part of this apprenticeship to include emergency first aid at work and the safe use of pesticides as well as choosing to do one of the following: boom sprayer, mounted, trailed or self-propelled equipment, granular applicator equipment or handheld applicator equipment.

Progression: University study such as our BSc Agriculture or continue in employment in the industry.

SCAN HERE
with Zappar
to...

TAKE A VIRTUAL
TOUR OF WHERE
& WHAT YOU'LL
STUDY



VIEW
ACCOMMODATION
ON CAMPUS

HEAR FROM
OUR ALUMNI
SARAH CANN
ROBOTIC DAIRY
FARMER

Want to know more? Search '#farming' at bicton.ac.uk and duchy.ac.uk



SCAN HERE
with Zappar
to...



TAKE A VIRTUAL
TOUR OF WHERE
& WHAT YOU'LL
STUDY

VIEW
ACCOMMODATION
ON CAMPUS

HEAR FROM
OUR ALUMNI
ESTHER KING
YORKSHIRE
WILDLIFE TRUST

I want a career in... COUNTRYSIDE & CONSERVATION

The current climate emergency is changing the way we view and manage our planet and natural environment. In the future all businesses and organisations will be required to review and improve their impact on the environment. These courses will provide you with the skills and knowledge of how sustainability, conservation and the natural environment can be applied to a wide range of sectors.

Study Full-time

LAND-BASED STUDIES (COUNTRYSIDE CONSERVATION & HORTICULTURE) DIPLOMA LEVEL 1

Where: Bicton College and Duchy College Rosewarne
Entry Requirements: Two or more GCSEs at grade 2 or above, or successful completion of Entry Level qualification.

You will study a range of modules including plant and tree identification, estate skills, land-based machinery, tool use and care, wildlife and conservation and health and safety. The course acts as an introduction to countryside management and horticulture for students who love the outdoor learning environment, who are practically orientated and don't mind working in all weathers.

Progression: Land & Wildlife Diploma Level 2.

LAND & WILDLIFE DIPLOMA LEVEL 2

Where: Bicton College and Duchy College Rosewarne
Entry Requirements: Three or more GCSEs at grade 3 or above, or successful completion of a relevant Level 1 qualification.

During the course you will study a range of modules including estate skills, land-based machinery, species identification, ecology and wildlife conservation, health and safety, conservation of flora and fauna, and work experience. You will also learn the skills and knowledge to create boardwalks, post and rail fences, stiles, gates, hedge laying, surveying, management of invasive species, stream maintenance and tree planting.

Progression: Land & Wildlife Diploma Level 3.

CAREERS IN THIS INDUSTRY: RANGER, ECOLOGIST, ENVIRONMENTAL HEALTH PRACTITIONER, NATURE CONSERVATION OFFICER.

Study Full-time

LAND & WILDLIFE DIPLOMA LEVEL 3

Where: Bicton College and Duchy College Rosewarne
Entry Requirements: Four or more GCSEs at grade 4 or above, including English and/or maths, or successful completion of a relevant Level 2 qualification.

This will give you the opportunity to undertake a vast array of surveys for flora and fauna; build stiles and boardwalks; erect post and rail and post and wire fencing; undertake scientific study of freshwater systems; monitor and map coastal processes; understand legislation involved with habitat restoration and conservation; species reintroduction and rewilding; and species identification along with your own specialist project.

Progression: University study such as our FdSc Countryside & Conservation at our Bicton campus or employment in the industry.

CONSERVATION AND ENVIRONMENTAL SUSTAINABILITY LEVEL 3

Where: Duchy College Rosewarne
Entry Requirements: Four or more GCSEs, including English, maths and science at grade 3.

With Cornwall as your classroom, get the specialist technical, practical and industry-relevant skills needed for a career in the rapidly growing environmental sector. Covering a wide range of topics, this course emphasizes reducing climate change, global warming, high carbon economy and the need for conservation.

Progression: Full-time employment or onto university study.

I want a career in... GAMEKEEPING

Creating and maintaining good, healthy habitats which are beneficial to all wildlife is at the heart of a gamekeeper's job. Gamekeeping has changed significantly over the years and while you will still be responsible for the husbandry of both reared and wild game for shooting, your time will also be spent helping to shape the countryside and protecting its species.

Study Full-time

GAMEKEEPING & CONSERVATION DIPLOMA LEVEL 3

Where: Duchy College Stoke Climsland
Entry Requirements: Four or more GCSEs at grade 4 or above, including English and/or maths, or successful completion of a relevant Level 2 qualification.

During this two-year course you will have access to Duchy College's 283-hectare estate and woodlands where you will care for the College's pheasants and learn about the management of game bird, deer, farm habitat, woodlands and fisheries. You will also study land-based machinery, working dogs, pest and predator control and will organise a number of shoot days from start to finish which will include costings, promotion, event preparation and running the activities on the day.

If you love working outdoors, care about the countryside and the environment and would like to make significant contributions to the biodiversity and conservation of rare species, then why not join the 5,000 full-time gamekeepers currently employed in the UK.

British gamekeepers currently manage approximately 7.3 million hectares of the land in the UK and work closely with farm managers and foresters to help conserve both game and wildlife, using economically viable estate management policies.

Progression: University study, a higher apprenticeship or employment in the gamekeeping or related industries.

CAREERS IN THIS INDUSTRY: GAME FARMING, PEST CONTROL, ESTATE MAINTENANCE, GAMEKEEPER, RANGER, ESTATE MANAGER.



SCAN HERE
with Zappar
to...



TAKE A VIRTUAL
TOUR OF WHERE
& WHAT YOU'LL
STUDY

VIEW
ACCOMMODATION
ON CAMPUS

HEAR FROM
OUR ALUMNI
CONOR RAFFE
GAMEKEEPING &
WILDLIFE
MANAGEMENT
DIPLOMA LEVEL 3

Want to know more? Search '#country' at bicton.ac.uk and duchy.ac.uk

Want to know more? Search '#game' at bicton.ac.uk and duchy.ac.uk

ANIMAL MANAGEMENT & VETERINARY NURSING



Immerse yourself in the animal world with our wide range of full-time courses and apprenticeships. If you can picture yourself working in animal husbandry, marine biology, zoology or becoming a veterinary nurse, we are the college with the perfect course for you.

No matter which of our incredible campuses you choose to study at, you will be inspired by our amazing animal management facilities. When it comes to studying for a career in this industry, our dedicated animal centres are second-to-none and our team of amazing staff are experts in their field.

Our facilities and partnerships mean as a student you have access to a huge range of animal species, from small mammals, exotics and birds to aquatics, farm animals and even big cats. You also have the opportunity to visit and access real industry environments including Dartmoor Zoological Park and Newquay Zoo.



Career opportunities in this section

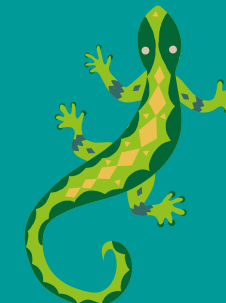
ANIMAL CARE ASSISTANT
VETERINARY NURSE
ZOOKEEPER
AND MORE...

Our Industry Partners

RSPCA	CAMEL CREEK
PHOENIX EQUINE VETS	DARTMOOR ZOOLOGICAL PARK
DONKEY SANCTUARY	TAVISTOCK PET EMPORIUM
NEWQUAY ZOO	

£18.2K

is the average
annual salary for a
veterinary nurse



78,000

people work in
the industry



SCAN HERE
with Zappar
to...



TAKE A VIRTUAL
TOUR OF
WHAT YOU'LL
STUDY

TOUR OUR
ROSEWARNE,
STOKE CLIMSLAND
AND BICTON
CAMPUSES

LEARN FROM
THE EXPERTS
LOGAN ODY
PROGRAMME
MANAGER

I want a career in... ANIMAL MANAGEMENT

Working with animals can be an extremely fulfilling and rewarding career. From working in kennels and catteries to large exotic animal collections, rescue centres or sanctuaries, there is a wide range of careers available on successful completion of your course. With access to a range of animal collections on our campuses you will gain the knowledge and practical training you need to pursue a career in this exciting industry.

Study Full-time

ANIMAL CARE DIPLOMA LEVEL 1

Where: Bicton College, Duchy College Rosewarne and Duchy College Stoke Climsland
Entry requirements: Four GCSEs, with English or maths at grade 3, and the rest at grade 2.

Learn the basic skills to start your career working with animals. You will study how to care for small mammals, birds and farm animals, handle and feed animals, clean their accommodation and carry out basic health care.

Progression: Animal Care Certificate Level 2.

ANIMAL CARE CERTIFICATE LEVEL 2

Where: Bicton College, Duchy College Rosewarne and Duchy College Stoke Climsland
Entry requirements: Five GCSEs, including maths or English at grade 4, with the rest at grade 3 or above.

This one-year course will provide you with the basic knowledge and experience of working with and caring for a range of animals, including looking at their health and husbandry, control and restraint of animals and feeding requirements. You will also study optional units.

Progression: Animal Management Diploma Level 3.

CAREERS IN THIS INDUSTRY: ZOOKEEPER, ANIMAL CARE ASSISTANT, ZOOLOGIST

Study Full-time

ANIMAL MANAGEMENT DIPLOMA LEVEL 3

Where: Bicton College, Duchy College Rosewarne and Duchy College Stoke Climsland
Entry requirements: Five GCSEs at grade 4 or above including English and maths.

This two-year course covers a wide range of topics including; animal behaviour and communication, biology, feeding and nutrition, health and husbandry, welfare, and breed development. **Progression:** University study such as our wide range of degrees in animal science and zoology.

Apprenticeship

ANIMAL CARE & WELFARE ASSISTANT APPRENTICESHIP LEVEL 2

Where: Bicton College, Duchy College Rosewarne and Duchy College Stoke Climsland
Entry requirements: Three or more GCSEs at grade 3 or above, or successful completion of a relevant Level 1 qualification. You will also need an employer willing to take you on as an apprentice.

Learn how to promote and maintain health and well-being; animal handling and grooming, and delivering basic treatment. **Progression:** Animal Management Diploma Level 3 or employment in the industry.

I want a career in... VETERINARY NURSING

As a veterinary nurse you will provide support to sick and injured animals who are receiving treatment in a veterinary practice and provide expert nursing care. You will help to educate owners on maintaining the health of their pets and carry out a range of medical treatments under veterinary supervision. Knowing that you have helped nurse animals back to full health is one of the most rewarding careers.

Study Full-time

ANIMAL NURSING ASSISTANTS CERTIFICATE LEVEL 2

Where: Bicton College and Duchy College Rosewarne
Entry requirements: GCSE English or maths at grade 5 or above, and a further three GCSEs at grade 3 or above. If you are aged 16-18 you should also have a voluntary placement in a veterinary practice for two days a week. If you are 19+ you will need a one or two day paid or voluntary placement.

During this course you will learn the practical skills and the underpinning knowledge for all aspects of work in an assisting role within a veterinary practice including animal handling and care, assisting with care and administrative duties in the veterinary environment. You will also undertake at least one day a week work experience in a veterinary practice. This is a one year course, with one day a week in college. Maths or English GCSE can be studied on a second day where a grade 4 or above has not been obtained.

Progression: Veterinary Nursing Diploma Level 3 or our Animal Management Diploma Level 3.

CAREERS IN THIS INDUSTRY: VETERINARY NURSE, PET NUTRITIONIST, PET BEHAVIOURIST, VETERINARY PHYSIOTHERAPIST.

Apprenticeship

VETERINARY NURSING APPRENTICESHIP LEVEL 3

Where: Bicton College and Duchy College Rosewarne
Entry requirements: Five GCSEs including maths, English and a science at grade 5 or above.

During this two-and-a-half year course you will learn the operational requirements of a veterinary practice, veterinary nursing duties, anatomy, physiology and genetics, animal health, wellbeing and husbandry, supporting the supply of veterinary medicines, supporting veterinary anaesthesia and preoperative and post-operative nursing care.

You will spend one day a week on campus and the remaining four days in the workplace with your employer. There will also be occasional block weeks throughout the course. To study this course you must be in paid employment with a Royal College of Veterinary Surgeons approved training practice.

Our veterinary nursing teaching areas are designed to simulate a veterinary practice. We have a radiography room, laboratory, kennel area and operating theatre. We have many pieces of equipment that you would expect to find in a veterinary practice such as microscopes, anaesthetic machines, operating tables and a large variety of surgical instruments. With our equipment, purpose built facilities, working farms and equestrian centres, you will have access to animals you would expect to come across in veterinary practices.

Progression: Professional registration as a veterinary nurse or our FdSc Veterinary Nursing at our Rosewarne campus.



SCAN HERE
with Zappar
to...



TAKE A VIRTUAL
TOUR OF WHERE
& WHAT YOU'LL
STUDY

LEARN FROM
THE EXPERTS
CLAIRE KENT
PROGRAMME
MANAGER

HEAR FROM
OUR ALUMNI
TONI COBBETT
HEAD NURSE
ST CLEMENT
VETERINARY CLINIC



SCAN HERE
with Zappar
to...



TAKE A VIRTUAL
TOUR OF WHERE
YOU WILL STUDY

LEARN MORE
ABOUT WHAT
YOU WILL STUDY

I want a career in... **ZOOLOGY**

Zoos are no longer simply collections of animals for people to visit, they play a vital role in carrying out conservation work. Captive breeding programmes, protecting endangered species, and inspiring the next generation to care and protect these animals, are all essential tasks zoos carry out on a day-to-day basis and you could play a vital role in this important work.

Study Full-time

Study Full-time

ANIMAL MANAGEMENT DIPLOMA LEVEL 3

Where: Duchy College Rosewarne and Duchy College Stoke Climsland

Entry requirements: 5 or more GCSEs at grade 4 or above, including English, maths and science.

This course is perfect if you would like a career caring for animals in a zoo-based setting. We work in partnership with Dartmoor Zoological Park to ensure you gain the practical, real-life experience that employers look for. During this course you will study a wide range of subjects including animal nutrition, animal handling and safe working, health and welfare, husbandry of exotic species, animal biology, animal training, behaviour, breeding, zoological collections and wildlife ecology.

There are one- and two-year options available with this pathway and we will work with you to decide which is best for you. Our

state of the art animal management centre at Duchy College Rosewarne provides dedicated practical facilities for working with a range of animals, including exotic species, aquatics, birds, zoo animals and large animals, with links highly qualified and industry experienced teaching staff. At Duchy College Stoke Climsland there are strong links with Dartmoor Zoological Park and two days per week are spent there, with a further day on campus and a day of work experience at Dartmoor Zoo working alongside the zoo staff.

Progression: University study such as our FdSc Zoological Conservation, FdSc Animal Behaviour & Psychology, FdSc Animal Husbandry & Welfare, FdSc Animal Health and Management or BSc (Hons) Applied Zoology & Conservation.

CAREERS IN THIS INDUSTRY: ZOOKEEPER, ANIMAL CARE ASSISTANT, ANIMAL TECHNICIAN, CONSERVATIONIST.

Want to know more? Search '#zoo' at bicton.ac.uk and duchy.ac.uk

HEAR FROM OUR ALUMNI

LAURA DENNIS FUNDRAISING MANAGER, THE HUGS FOUNDATION

Laura initially studied a Diploma in Horse Management and Care before going on to achieve a distinction in Business Management for the Environment and Land-based Sector and progressing to do a degree in Animal Behaviour and Psychology – all with The Cornwall College Group.

Since then she has secured a job as the Fundraising Manager for The Hugs Foundation – a charity that provides rescue and rehabilitation for horses, ponies and other animals that have been mistreated, abandoned or abused as well as providing well-being support to children, young people, the elderly and veterans.

“The work experience side of my course really helped me find exactly what career I wanted.”



ENGINEERING, PLANT OPERATIONS & CONSTRUCTION

Whether traditional manufacturing, specialist marine or cutting-edge aeronautics, we have a broad engineering programme for you to choose from.

Our incredible facilities across Devon and Cornwall include the best equipment for you to use during your studies.

With a range of industry equipment and machinery for you to use - we have the facilities for you to learn, practice and to excel in your profession.

Engineering is one of the most in-demand industries and can lead to long and successful careers taking you across the globe.



Career opportunities in this section

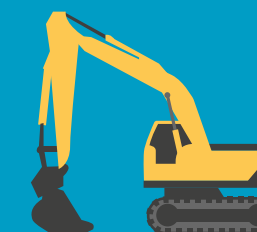
AGRICULTURAL MACHINIST
MACHINERY OPERATOR
AGRICULTURAL ENGINEER
DEMOLITION OPERATIVE
AND MORE...

Our industry partners & connections

POLYMERMEDICS	KAWASAKI
MINEAR ENGINEERING	PALL
INVERTERFUSION LTD	HOLT JCB
BD	EAGLE PLANT
MARS WRIGLEY	BUILD EXETER

5.7 million

people work in engineering in the UK, accounting for just over 19% of all UK employment



182,000

people will be needed by engineering companies in 2022



SCAN HERE
with Zappar
to...



TAKE A VIRTUAL
TOUR OF WHERE
& WHAT YOU'LL
STUDY

HEAR FROM
OUR ALUMNI
JACK O'KEIFE
MAINTENANCE
TEAM LEADER
HITACHI RAIL EUROPE

VIEW
ACCOMMODATION
ON CAMPUS

I want to work in... LAND-BASED ENGINEERING

If you love science, technology, engineering, or information technology, then a career in land-based engineering could be for you. The skills and types of land-based engineering include diagnostics repair and testing, all in the context of diesel and petrol engines, equipment controlled by GPS technology and integrated into environmental information; a fantastic mix of innovation and problem solving.

Study Full-time

LAND-BASED ENGINEERING CERTIFICATE LEVEL 2

Where: Bicton College and Duchy College Stoke Climsland
Entry Requirements: Three or more GCSEs at grade 3 or above, or successful completion of a relevant Level 1 qualification.

Modern agriculture is full of incredible opportunities, with huge demand for qualified engineers. During this one-year course you will learn the skills and theory to maintain a wide variety of land-based machinery and equipment. Units covered include: health and safety, workshop practice, transmission systems, engines, fabrication, hydraulics, machinery operations. It will include 150 hours of work experience.

Progression: Land-based Engineering Diploma Level 3 or employment in the industry.

LAND-BASED ENGINEERING DIPLOMA LEVEL 3

Where: Bicton College
Entry Requirements: Four or more GCSEs at grade 4 or above, including English and/or maths, or successful completion of a relevant Level 2 qualification.

This two-year course is ideal if you want in-depth insight into the mechanics and science for land-based engineering. You might cover things like inspecting and testing land-based machinery, maintaining a production plant or servicing a fleet of grounds keeping ATVs. You'll also gain plenty of practical experience in your choice of skills and attend work experience placements with local employers.

Progression: University study such as our HNC Engineering or employment in the industry.

CAREERS IN THIS INDUSTRY: AGRICULTURAL MACHINIST, MACHINERY OPERATOR, AGRICULTURAL ENGINEER.

Apprenticeship

LAND-BASED ENGINEER APPRENTICESHIP LEVEL 2

Where: Bicton College and Duchy College Stoke Climsland
Entry Requirements: Three or more GCSEs at grade 3 or above, or successful completion of a relevant Level 1 qualification. Plus an employer willing to take you on as an apprentice.

There has never been a better time to start a land-based engineering apprenticeship. The sector is technologically advancing at a fascinating rate, encompassing systems such as precision farming aids, satellite guidance, telematics, electronic controls, driverless technology, transmissions, engines, hydraulics and welding.

Progression: Land-based Engineering Apprenticeship Level 3 or employment in the industry.

LAND-BASED ENGINEER TECHNICIAN APPRENTICESHIP LEVEL 3

Where: Bicton College and Duchy College Stoke Climsland
Entry Requirements: Four or more GCSEs at grade 4 or above including English and/or maths, or successful completion of a relevant Level 2 qualification. Plus an employer willing to take you on as an apprentice.

Throughout this apprenticeship you will build on the work completed at Level 2, but focus on your employer's specific needs. These may include advanced welding skills, computer-based diagnostics or electrical systems maintenance.

Progression: University study such as our HNC Engineering or employment in the industry.

I want to work in... PLANT OPERATIONS & GROUNDWORKS

Plant operations is the broad term referring to the operation and driving of heavy plant equipment such as, excavators, dumpers, rollers and telescopic handlers to name a few. Groundworks is the specific job role of preparing the ground using some of these machines within a construction, civil engineering, roads, railways or landscaping project.

Study Full-time

CONSTRUCTION MULTISKILLS DIPLOMA WITH PLANT OPERATIONS OPTIONS LEVEL 1

Where: Duchy College Stoke Climsland
Entry Requirements: Two or more GCSEs at grade 2 or above, or successful completion of Entry Level qualification.

This course provides you with a range of skills and knowledge from core construction trades. If you are interested in a career in construction and are not sure which trade is for you, then this course will give you the opportunity to experience different trades and strengthen your knowledge and understanding.

Progression: Specialist trade courses at either Level 1 or Level 2, Plant Operations Level 2, Plant and Construction Apprenticeship at Level 2.

CONSTRUCTION DRIVER TRAINING LEVEL 2

Where: Duchy College Stoke Climsland
Entry Requirements: Two or more GCSEs at grade 2 or above. CSCS HSE completed within the last year.

You will learn to operate a variety of equipment including excavators, forklifts, dumpers and road rollers.

Progression: Employment or further qualifications.

CAREERS IN THIS INDUSTRY: DEMOLITION OPERATIVE, DUMPER OPERATOR, RIDE ON ROLLER OPERATOR.

Study Full-time

PLANT OPERATIONS – GROUNDWORKS CERTIFICATE LEVEL 2

Where: Bicton College
Entry Requirements: Three or more GCSEs at grade 3 or above, or successful completion of a relevant Level 1 qualification.

This plant operations certificate is your gateway to gaining your full professional operators qualification if you want operate heavy plant to the exacting standards of the modern construction site this is the course for you. Once complete and the NPORS test has been passed this is your passport to a career in the construction industry and recognition of your professional operating skills.

Progression: Employment in the industry.

Apprenticeship

CONSTRUCTION PLANT OPERATIVE APPRENTICESHIP LEVEL 2

Where: Duchy College Stoke Climsland
Entry Requirements: Three or more GCSEs at grade 3 or above, including English and maths, or successful completion of a relevant Level 1 qualification. Plus an employer.

This apprenticeship enables you to demonstrate and recognise your skills, knowledge and understanding and prove your competence in a real workplace environment.

Progression: Employment or further qualifications.



SCAN HERE
with Zappar
to...



VIEW
ACCOMMODATION
ON CAMPUS

TAKE A VIRTUAL
TOUR OF WHERE
& WHAT YOU'LL
STUDY

EQUINE



If you are passionate about horses and would love a career in the equine industry, there is nowhere better to study than with us. Our industry-leading equine courses at Bicton College and Duchy College Stoke Climsland regularly receive national recognition, with students achieving great successes during and after their course.

Studying with us means you will learn from our staff who are real experts in their field and you'll have access to our amazing facilities, including indoor and outdoor arenas, walkers, solariums, stables, under cover practical areas, weighbridges, and more. You will also get the opportunity to explore the huge areas of countryside that surround our beautiful land-based college campuses.

As the career college, we are also the region's largest provider of apprenticeships, which mean you can earn an income whilst studying a subject you are passionate about.



Career opportunities in this section

GROOM

YARD MANAGER

HORSE BEHAVIOURIST

AND MORE...

Our industry partners & connections

LAMERTON PONY CLUB

BICTON ARENA

SIRONA THERAPEUTIC
HORSEMANSHIP CIO

LITTLE MARGATE
EQUESTRIAN CENTRE

EAST CORNWALL PONY
CLUB

27 million

people in Britain
have an interest in the
equestrian industry



£4.7 billion

of consumer spending takes place
in the equestrian sector each year
across a range of services



I want a career in...
EQUINE MANAGEMENT

A career in the equine industry can be highly rewarding. We will prepare you for a successful career by providing you with the knowledge and practical skills to thrive within the industry, whether that be working practically on a yard as a groom or a yard manager, supporting and running equestrian events, breeding and stud management, equine welfare officer, coaching and training or a whole range of other opportunities.

Study Full-time

HORSE CARE LEVEL 1

Where: Bicton College and Duchy College Stoke Climsland
Entry requirements: Four GCSEs, with English or maths at grade 3, and the rest at grade 2.

This one-year course introduces you to the equine industry and develops your essential skills. You'll be learning from experienced and well qualified staff, who are there to give you the very best start to your career. There are two options on the course, riding or non-riding. You'll be working on a range of different topics and units including: mucking out, rugs and rugging, tack and tacking up, feeding and watering, health and safety, communication, handling horses and riding horses.

Progression: Horse Care Level 2.

HORSE CARE LEVEL 2

Where: Bicton College and Duchy College Stoke Climsland
Entry requirements: Three or more GCSEs at grade 3 or above, or successful completion of a relevant Level 1 qualification.

During this one-year course you will learn a range of husbandry skills including feeding, horse health, lungeing horses, exercising, anatomy and physiology, and tack and equipment. You will also undertake work experience. This qualification is ideal for learners who wish to progress to Level 3 study.

Progression: Equine Management Level 3, an apprenticeship or employment in the industry.

Study Full-time

EQUINE MANAGEMENT LEVEL 3

Where: Bicton College and Duchy College Stoke Climsland
Entry requirements: Four or more GCSEs at grade 4 or above including English and/or maths, or successful completion of a relevant Level 2 qualification.

You will learn the practical stable management skills that will enable you to be a valuable employee in the future and have the opportunity to ride and lunge a range of horses to develop your skills. You will study a range of topics including nutrition, biology, health, behaviour and welfare of horses. There are riding and non-riding options available. We encourage you to take the BHS stages alongside your programme which look great on your CV and there's also the option to take a coaching module to support those who would like to be instructors themselves in the future.

Both Bicton College and Duchy College Stoke Climsland campuses are located in beautiful countryside and provide dedicated equestrian facilities, which include indoor and outdoor schools, horse walkers and working yards stabling a range of horses.

Progression: University study such as our FdSc Equitation, Training & Behaviour at our Duchy College Stoke Climsland campus. Or employment in the industry.

Apprenticeship

EQUINE GROOM APPRENTICESHIP LEVEL 2

Where: Bicton College and Duchy College Stoke Climsland
Entry requirements: Three or more GCSEs at grade 3 or above, or successful completion of a relevant Level 1 qualification. Plus an employer willing to take you on as an apprentice.

Apprenticeships allow you to work while gaining a nationally recognised qualification at the same time, so why not combine your love of horses with earning money? Over the course of 15-18 months, you will be working in paid employment within the equine industry and you will spend one day every two weeks during term time at college. You will study a wide range of subjects around the care of all different types of horses including safe working practices, yard and field routines and duties, horse anatomy, physiology and welfare, horse handling, care and appearance, saddlery and equipment, travelling horses, non-ridden exercise as well as core behaviours such as team work and communication.

If you ride or do not ride, don't worry, there are specialised routes depending on your apprenticeship placement such as: riding, non-riding, racing, breeding or driving.

Both Bicton College and Duchy College Stoke Climsland campuses are located in beautiful countryside and provide dedicated equestrian facilities, which include indoor and outdoor schools and working yards. Here you will have the opportunity to practice your skills in preparation for the end point practical assessments.

Progression: Senior Equine Groom Apprenticeship Level 3 or employment in the industry.

CAREERS IN THIS INDUSTRY: GROOM, YARD MANAGER, RIDING INSTRUCTOR, HORSE BEHAVIOURIST.

Apprenticeship

SENIOR EQUINE GROOM APPRENTICESHIP LEVEL 3

Where: Bicton College and Duchy College Stoke Climsland
Entry requirements: Four or more GCSEs at grade 4 or above including English and/or maths, or successful completion of a relevant Level 2 qualification. Plus an employer willing to take you on as an apprentice.

This Level 3 apprenticeship will help you prepare for a more supervisory role, which could include planning horses' diet, nutrition and health plans. During the course you will learn how to promote and maintain the health and well-being of horses, prepare horses for work, maintain their health and well-being during transportation and consider health and safety.

Progression: University study such as our FdSc Equitation, Training & Behaviour at our Duchy College Stoke Climsland campus. Or employment in the industry.

SCAN HERE
with Zappar
to...

TAKE A VIRTUAL
TOUR OF WHERE
& WHAT YOU'LL
STUDY



VIEW
ACCOMMODATION
ON CAMPUS

HEAR FROM
OUR ALUMNI
BRADLEY
MOORE-TAYLOR
OWNER | GARLANDS
FARM EQUESTRIAN

Want to know more? Search '#equine' at bicton.ac.uk and duchy.ac.uk



FOUNDATION LEARNING

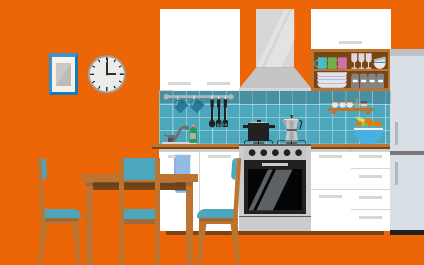
Supported Learning offers different pathways to enable young people to develop skills and confidence to prepare for adulthood and make future life choices.

Our pathways include: Independence which supports your transition to adulthood with a focus on developing your independence, and Skills which develops your skills and behaviours to prepare you for future study or work. Our vision is to support you to be independent, confident and resilient.



**Across The Cornwall
College Group,
we have:**

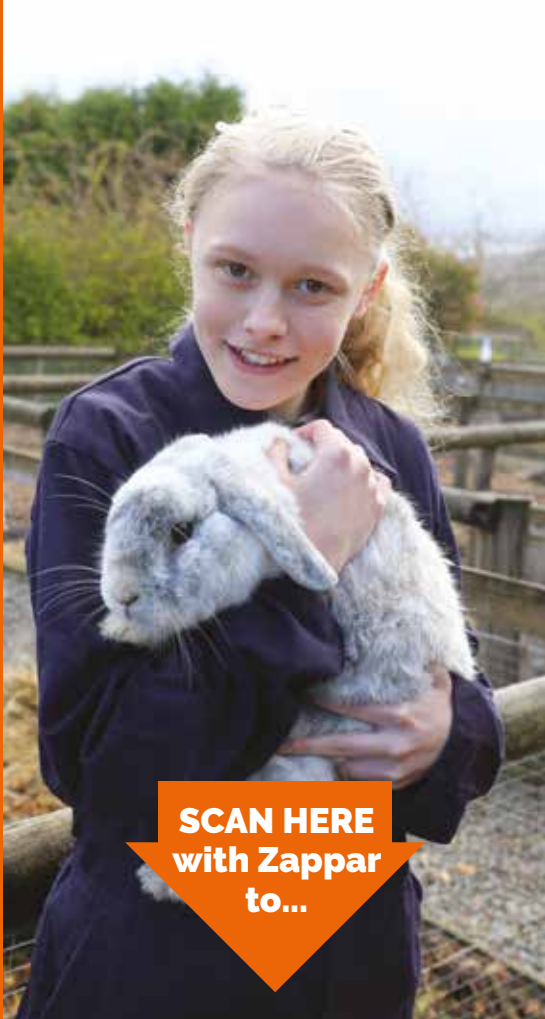
3 Independent Living Suites



2 on-site Costa Coffee shops for work experience in a supported environment



Courses that prepare you for adulthood



SCAN HERE
with Zappar
to...



TAKE A VIRTUAL
TOUR OF WHERE
YOU WILL STUDY

LEARN MORE
ABOUT WHAT
YOU WILL STUDY

I want to become more... INDEPENDENT, CONFIDENT AND RESILIENT

Within the supported learning team our vision is to support you to be INDEPENDENT, CONFIDENT AND RESILIENT so that you are well-prepared to engage with the wider community.

Skills Pathway

To explore destinations and work towards next steps. Further develop independence; behaviour and communication skills; English and maths. Includes tasters for a range of vocational areas if further education is your goal.

SKILLS TOWARDS VOCATIONAL STUDIES ENTRY LEVEL

Where: Bicton College and Duchy College Stoke Climsland
Entry Requirements: Working at Entry Level 2 or above in English and maths.

On this course you will develop skills, knowledge and behaviours for successful learning. You will also gain an insight into different vocational options that will support successful career planning and progression to further study or work. The vocational options on offer are specific to the campus you choose to study at, and use specialists to deliver where required. Learners tell us that the opportunity to explore cross-college vocational pathways

is an opportunity to understand what the higher-level course would be like. They also get to know the staff, gain skills and build confidence to apply for a higher-level course in their chosen subject area.

Progression: Once you have completed this pathway, you may wish to progress on to other pathways within Foundation Learning such as Vocational or Works. You may feel ready for a higher-level course.



Want to know more? Search '[#foundationlearning](#)' at [bicton.ac.uk](#) and [duchy.ac.uk](#)

HORTICULTURE, FLORISTRY & ARBORICULTURE

Located in beautiful locations in Cornwall and Devon, our Bicton College and Duchy College Rosewarne campuses allow you to be surrounded by a wide range of plants, flowers and trees.

At Bicton College we offer tree surgery courses where you will have access to over 200 hectares of parkland and rolling countryside, together with a walled garden and specialist floristry workshops.

Our Duchy College Rosewarne campus houses a well-established working nursery which supplies garden centres across Cornwall as well as the Eden Project and the National Trust.



Career opportunities in this section

FLORIST

GROUNDWORKS/GARDEN MAINTENANCE

HORTICULTURE TECHNICIAN

LANDSCAPE DESIGNER

PLANT PATHOLOGIST

HORTICULTURIST RESEARCHER

AND MORE...

Our industry partners & connections

RHS ROSEMOOR

CORMAC

THE EDEN PROJECT

CORNWALL COUNCIL

NATIONAL TRUST

LOST GARDENS OF HELIGAN

PLYMOUTH CITY COUNCIL

RIVIERA PRODUCE

3.1%

is the predicted growth
of the sector by 2027



£35,000

is the average salary of
senior horticulturists or
growers





SCAN HERE
with Zappar
to...



TAKE A VIRTUAL
TOUR OF WHERE
& WHAT YOU'LL
STUDY



VIEW
ACCOMMODATION
ON CAMPUS

I want a career in... ARBORICULTURE

If you want an adventurous and physically demanding career working outdoors, solving problems and perhaps climbing trees or working with chainsaws, then a career in forestry and arboriculture is perfect for you. The arboriculture industry manages trees for their benefits and values in diverse urban and rural locations from city parks and urban woodlands, to country estates and private gardens.

Study Full-time

LAND-BASED STUDIES (COUNTRYSIDE CONSERVATION & HORTICULTURE) DIPLOMA LEVEL 1

Where: Bicton College

Entry Requirements: Two or more GCSEs at grade 2 or above, or successful completion of Entry Level qualification.

During this introductory course you will study a range of modules including safe and effective working practices, preparation for work, plant and tree identification, estate skills, land-based machinery, tool use and care, wildlife and conservation and health and safety.

Progression: Forestry & Arboriculture Technical Certificate Level 2.

FORESTRY & ARBORICULTURE DIPLOMA LEVEL 2

Where: Bicton College

Entry Requirements: Three or more GCSEs at grade 3 or above, or a merit from a relevant Level 1 qualification.

This one-year course will give you an understanding of plant and soil science, the ability to work safely with chainsaws and other arboricultural tools, the ability to identify different tree species and some knowledge of how to manage them. In short, you will have the necessary skills to begin a career in forestry or arboriculture.

Progression: Forestry & Arboriculture Advanced Technical Certificate Level 3 or employment in the industry.

CAREERS IN THIS INDUSTRY: ARBORICULTURAL OFFICER, FORESTRY WORKER, FOREST OFFICER, RANGER, FOREST MANAGER.

Study Full-time

FORESTRY & ARBORICULTURE DIPLOMA LEVEL 3

Where: Bicton College

Entry Requirements: Four or more GCSEs at grade 4 or above, including English and/or maths, or a merit from a relevant Level 2 qualification.

You will study tree biology and the relationship they have with the environment, pests and diseases. You will learn how trees contribute to the environment, how tree professionals make decisions about the selection of trees, the use of chainsaws, felling trees and climbing safely.

Progression: Employment in the industry, or university study.

Apprenticeship

ARBORIST APPRENTICESHIP STANDARD (TREE SURGERY) LEVEL 2

Where: Bicton College

Entry Requirements: Three or more GCSEs at grade 3 or above, or successful completion of a relevant Level 1 qualification. Plus an employer willing to take you on as an apprentice.

While learning the practical side of arboriculture with your employer, you will also attend college on a block release programme and study in our arboretum with veteran and specimen trees, machinery workshops and over 200 acres of extensive parklands.

Progression: Further study with a higher apprenticeship or employment in the industry.

I want a career in... FLORISTRY

If you like to interact with others, be creative and are keen to develop practical, technical floristry skills, then our Level 2 and Level 3 courses are ideal for you. They will provide you with all the skills required to become employed in the industry or to start your own business.

Study Full-time

FLORISTRY TECHNICAL CERTIFICATE LEVEL 2

Where: Bicton College and Duchy College Rosewarne

Entry Requirements: Three or more GCSEs at grade 3 or above, or successful completion of a relevant Level 1 qualification.

Throughout this one-year course you will learn about different flowers and plants and how to look after them. You will also learn that there is more to floristry than flowers and that for florists to be successful, they need to understand their tools, environment and the finishing touches that make a difference. With this, you will develop an understanding of design principles and the skills needed to apply these to the design and creation of floristry products. You will gain an understanding of how the floristry business operates and develop skills needed to interact with customers and identify their needs.

Progression: Floristry Advanced Technical Diploma Level 3.

CAREERS IN THIS INDUSTRY: JUNIOR FLORIST, FLORIST, FLORIST MANAGER, SENIOR FLORIST.

Study Full-time

FLORISTRY ADVANCED TECHNICAL DIPLOMA LEVEL 3

Where: Bicton College and Duchy College Rosewarne

Entry Requirements: Four or more GCSEs at grade 4 or above, including English and/or maths, or successful completion of a relevant Level 2 qualification.

You will study a range of topics that will provide you with the necessary skills and knowledge to progress into employment in the floristry industry. You will study creative floral design methods and techniques, botany and business skills. You will also cover in detail how to produce a range of designs, including tied designs, wired designs, glued designs and designs in different mediums. You will study how to produce floral designs for different events, such as weddings and funerals. You will also learn about current and future design development and innovation in floristry.

Progression: Directly into employment or self-employment in the industry. Or further study.



SCAN HERE
with Zappar
to...

TAKE A VIRTUAL
TOUR OF WHERE
& WHAT YOU'LL
STUDY

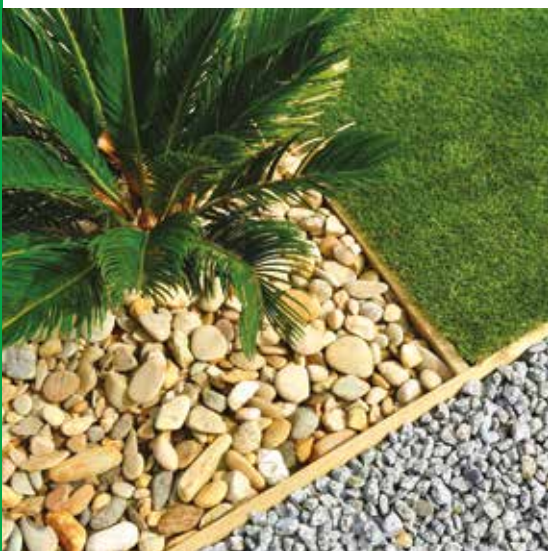


VIEW
ACCOMMODATION
ON CAMPUS

HEAR FROM
OUR ALUMNI
JENNIFER SIMPSON
OWNER
TWIGS & GREENS

Want to know more? Search **'#trees'** at bicton.ac.uk and duchy.ac.uk

Want to know more? Search **'#florist'** at bicton.ac.uk and duchy.ac.uk



I want a career in... HORTICULTURE

Plants play an important role in all our lives by providing us with oxygen and food sources. This combined with the changing face of agriculture and food production within the UK and the current climate emergency, make this an incredibly exciting area of study. As a horticulturalist you will use your scientific knowledge of plants and soil to grow a wide variety of plants whilst also considering the impact on the environment.

Study Full-time

LAND-BASED STUDIES (COUNTRYSIDE CONSERVATION & HORTICULTURE) DIPLOMA LEVEL 1

Where: Bicton College and Duchy College Rosewarne
Entry Requirements: Two or more GCSEs at grade 2 or above, or successful completion of Entry Level qualification.

During the course you will study a range of modules including safe and effective working practices, preparation for work, plant and tree identification, estate skills, land based machinery, tool use and care, wildlife and conservation and health and safety. The course acts as an introduction to countryside management and horticulture for students who love the outdoor learning environment, who are practically orientated and don't mind working in all weathers.

Progression: Horticulture Certificate Level 2.

HORTICULTURE CERTIFICATE LEVEL 2

Where: Bicton College and Duchy College Rosewarne
Entry Requirements: Three or more GCSEs at grade 3 or above, or successful completion of a relevant Level 1 qualification.

During this one-year programme you will be given an introduction to a wide range of topics including: plant and soil science, landscape surfaces, establishing and maintaining plants, plant propagation, plant names and plant selection.

Progression: Horticulture Diploma Level 3 or employment in the industry.

Study Full-time

HORTICULTURE DIPLOMA LEVEL 3

Where: Bicton College and Duchy College Rosewarne
Entry Requirements: Four or more GCSEs at grade 4 or above, including English and/or maths, or successful completion of a relevant Level 2 qualification.

This one- or two-year qualification gives you the opportunity to study a range of specialist, technical and practical skills. The knowledge you learn will build upon the core skills of; safe working practices, equipment and machinery, plant identification, plant health, plant and soil science and maintenance of turf. You can then learn further specialist skills such as; garden design, business management, ponds/water features, alpine displays, tree and shrub maintenance, constructing landscape features such as steps, paths or walls and horticultural crop production.

Progression: University study such as our FdSc Horticulture or BSc (Hons) Horticulture (Plant Science) at The Eden Project or employment in the horticulture industry.

Apprenticeship

HORTICULTURE & LANDSCAPE OPERATIVE APPRENTICESHIP LEVEL 2

Where: Bicton College and Duchy College Rosewarne
Entry Requirements: Three or more GCSEs at grade 3 or above, or successful completion of a relevant Level 1 qualification. Plus an employer willing to take you on as an apprentice.

Horticulture and landscape operatives can be employed to work in public parks and gardens, green spaces and historic gardens, private gardens and estates or in production nurseries and retail outlets. This course is very much orientated towards providing you with the building blocks of plant-based practical skills and knowledge, giving you the perfect starting point to your career.

Progression: Horticulture & Landscape Supervisor Apprenticeship Level 3.

Apprenticeship

HORTICULTURE & LANDSCAPE SUPERVISOR APPRENTICESHIP LEVEL 3

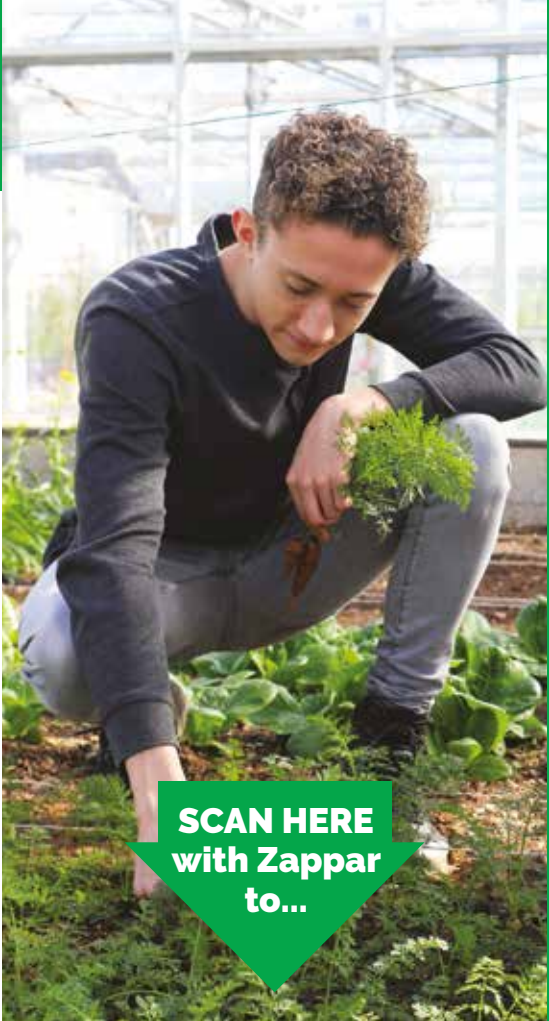
Where: Bicton College and Duchy College Rosewarne
Entry Requirements: Four or more GCSEs at grade 4 or above including English and/or maths, or successful completion of a relevant Level 2 qualification. Plus an employer willing to take you on as an apprentice.

You will choose from a pathway of either horticulture, landscaping, production horticulture or parks, gardens and green spaces. Working and learning in the horticulture and landscape industries is rewarding, offers a diverse range of employment opportunities and includes a range of skills that are transferable into other industries following further studies. This course is very much orientated towards providing you with the knowledge and skills required in supervising a team within the workplace, giving you the essential next step in your career.

Progression: University study such as our FdSc Horticulture or BSc (Hons) Horticulture (Plant Science) at The Eden Project or employment in the horticulture industry.

CAREERS IN THIS INDUSTRY: PRODUCTION MANAGER, LANDSCAPE SITE MANAGER, GARDENER, LANDSCAPER.

Want to know more? Search '#hort' at bicton.ac.uk and duchy.ac.uk



SCAN HERE
with Zappar
to...



TAKE A VIRTUAL
TOUR OF WHERE
& WHAT YOU'LL
STUDY

VIEW
ACCOMMODATION
ON CAMPUS

MILITARY & PROTECTIVE SERVICES ACADEMY

Whether you want a career in the blue light services, armed forces or protective sector, we will give you the best start. Discover what you are truly made of as we put you through your paces on our team building and personal development programmes. Working with military recruitment teams, we'll make sure you're ready for the ultimate test.

Many of our staff are former service personnel themselves, so they know what it takes to help their students succeed in this rewarding career path.

After being guided through our renowned military and protective services academy by our expert team, our past students have achieved high ranks throughout the armed forces and emergency services.



Career opportunities in this section

ROYAL NAVY

ARMY

ROYAL AIR FORCE

ROYAL MARINES

EMERGENCY AND RESCUE SERVICES

AND MORE...

Our industry partners & connections

MILITARY COVENANT

THE ARMY

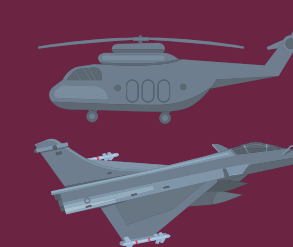
THE ROYAL NAVY

LAUNCESTON FIRE AND
RESCUE SERVICE

AFCO PLYMOUTH

260,000

jobs are supported
by the UK's
defense industry



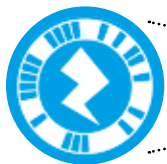
£20 billion

is spent in the sector
by the UK government
each year





SCAN HERE
with Zappar
to...



TAKE A VIRTUAL
TOUR OF WHERE
& WHAT YOU'LL
STUDY

HEAR FROM
OUR ALUMNI
EMILY
ROYAL AIR FORCE
MILITARY POLICE

I want to serve in the... MILITARY & PROTECTIVE SERVICES

Our Military and Protective Services (MaPS) Academy provides the ultimate preparation for a career in the Army, Royal Navy, Royal Air Force, Royal Marines, emergency and rescue services, UK Border Force as well as voluntary or private security sector.

Study Full-time

MILITARY & PROTECTIVE SERVICES DIPLOMA LEVEL 2

Where: Bicton College and Duchy College Stoke Climsland
Entry Requirements: Three or more GCSEs at grade 3 or above, to include English or maths. Or successful completion of a relevant Level 1 qualification.

This one-year introductory course will explain the numerous uniformed service career options and entry requirements, as well as provide hands on experience with service kit and equipment, physical training preparation and terminology used in the uniformed services industry. You will learn from highly experienced armed forces and emergency services professionals, who are there to give you the very best start to your career. By gaining an introduction to service careers, developing your teamwork and physical fitness and your self-confidence, you will be prepared for the more specialised command and control, leadership and physical and mental resilience elements of further qualifications. We also offer optional trips including a three day London trip and a five day Normandy trip to the D-Day landing sites.

Progression: Military & Protective Services Diploma Level 3, or join the Armed Forces or uniformed services. If you would like to join the Army Foundation College at Harrogate in March, this course could form part of your preparation.

Study Full-time

MILITARY & PROTECTIVE SERVICES DIPLOMA LEVEL 3

Where: Bicton College and Duchy College Stoke Climsland
Entry Requirements: Four or more GCSEs at grade 4 or above, including English and/or maths. Or successful completion of a relevant Level 2 qualification (preferably at merit grade).

This one-year course focuses on developing your understanding of the uniformed services industry and developing both essential and advanced skills with the option to continue on to a second year, including more specialist units that include personal protection, crime scene investigation and emergency planning. You will gain a strong understanding of service life and learn how to remain calm and in control during emergency incidents. You will also become a confident communicator and have a strong understanding of service collaboration and national/international current affairs. We also offer optional trips including a three day London trip and a five day Normandy trip to the D-Day landing sites. By the end of the course you will have developed strong teamwork and leadership skills and will also be physically and mentally resilient. You will also be mentored through your chosen services application process and be ready to enter employment. We pride ourselves on our success rates with 80% of students who pass going straight into the military or protective services and the remaining 20% continuing their studies.

Progression: Direct employment with a uniformed service or year two of the diploma. Alternatively you could continue your studies with our FdSc Rescue & Emergency Management at our Bicton College campus, which will prepare you for officer entry as well as emergency planning and management careers.

SERVICES IN THIS INDUSTRY: ROYAL NAVY, ARMY, ROYAL AIR FORCE, ROYAL MARINES, EMERGENCY AND RESCUE SERVICES.

Want to know more? Search **'#military'** at bicton.ac.uk and duchy.ac.uk



SPORTS & FITNESS

Our fantastic partnerships with Plymouth Argyle Football Club, British Canoeing, The Woodland Trust and others, are designed to help you get the career you want.

So whether you want to be an elite athlete or an inspirational coach, we've got the course for you.



Career opportunities in this section

OUTDOOR INSTRUCTOR

PE TEACHER

COACH

NUTRITIONIST

SPORTS THERAPIST

FITNESS PROFESSIONAL

AND MORE...

Our industry partners & connections

WOODLAND TRUST

PLYMOUTH ARGLE FC

BRITISH CANOEING

ROCKLEY WATERSPORTS

THE WESTCOUNTRY
RIVERS TRUST

TAMAR TRAILS CENTRE

TRAINING ACADEMY SW

£39 billion

is contributed to the UK
economy from sport and physical
activity businesses each year



581,000

people are employed in
the business of sport in
the UK



SCAN HERE
with Zappar
to...



TAKE A VIRTUAL
TOUR OF WHERE
& WHAT YOU'LL
STUDY

VIEW
ACCOMMODATION
ON CAMPUS

HEAR FROM
OUR ALUMNI
JAMES SOBEY
OUTDOOR PURSUITS
INSTRUCTOR
IN2ACTION

I want a career in... OUTDOOR ADVENTURE

If you've ever thought of working in the outdoor industry either in the UK or abroad, then these courses are an ideal way of developing the key skills and qualities needed to enter and succeed in the exciting world of outdoor adventure education.

Study Full-time

OUTDOOR ADVENTURE EDUCATION DIPLOMA LEVEL 2

Where: Duchy College Stoke Climsland
Entry Requirements: Three or more GCSEs at grade 3 or above, or successful completion of a relevant Level 1 qualification.

This one-year course is an ideal introduction to outdoor adventure education and develops your essential leadership and coaching skills. You'll be spending a lot of time outside the classroom and learning from experienced outdoor sports coaches and instructors. During the course you will learn a wide range of topics from managing risks and keeping groups and yourself safe in the outdoors, to looking at how the body works and what the fitness requirements are to overcome challenges and complete expeditions. You will also develop your own coaching and leadership style that will help you get the most out of the people you work with.

Progression: Outdoor Adventure Diploma Level 3 or employment in the industry.

Study Full-time

OUTDOOR ADVENTURE EDUCATION DIPLOMA LEVEL 3

Where: Duchy College Stoke Climsland
Entry Requirements: Four or more GCSEs at grade 4 or above, including English and/or maths, or successful completion of a relevant Level 2 qualification.

During this two-year course you'll be spending a lot of time outside the classroom, pushing yourself to take on new challenges whilst developing skills and experience in a wide range of outdoor activities. Alongside this you will be developing your leadership and coaching skills as well as gaining that all important understanding of how businesses in the sector operate. In addition to our facilities on campus, which include a gym and sports hall, you'll also benefit from being situated in one of the best placed college campuses for outdoor activities anywhere in the UK. Our highly experienced instructors will have you out and about for a whole day of practical activity one day a week all year. We will provide access to equipment and training which means you could be out paddling on lakes and rivers, climbing on indoor and outdoor routes, ripping up trails on a mountain bike, navigating over Dartmoor or Bodmin and even catching the odd wave. In addition there will be opportunities to push yourself during our expeditions and study tours which may see you climbing world famous routes in Fontainebleau France, or summiting mountains in North Wales.

Progression: University study such as our FdSc Sport, Health & Fitness with possible progression on to our BSc (Hons) Sport, Health & Exercise Science (top-up) at our Camborne campus. Employment in the industry.

CAREERS IN THIS INDUSTRY: OUTDOOR INSTRUCTOR, OUTDOOR CENTRE MANAGER, PE TEACHER, EXPEDITION LEADER.

Want to know more? Search **'#adventure'** at bicton.ac.uk and duchy.ac.uk

I want a career in... SPORT

If you have a passion for sport and fitness and have your sights set on becoming a sports coach, PE teacher, fitness instructor or leisure manager, then a sports coaching diploma is ideal for you.

Study Full-time

SPORT (SPORTS COACHING) DIPLOMA LEVEL 2

Where: Duchy College Stoke Climsland
Entry Requirements: Three or more GCSEs at grade 3 or above, or successful completion of a relevant Level 1 qualification.

This one-year diploma introduces you to the theory behind how the body works and the practical steps needed to plan and coach your very own sport/fitness session. You will learn about the principles of training and how to perform practically to achieve sporting excellence. By gaining an introduction to sports coaching, you will be prepared for the more specialised tactical awareness, sporting skills, awareness of healthy exercise and nutrition needed to move on to further qualifications. You will also be spending a lot of time in our on-campus sports hall, fully equipped gym and 3G pitch.

Progression: Sport (Sports Coaching) Diploma Level 3 or employment in the industry.

CAREERS IN THIS INDUSTRY: COACH, NUTRITIONIST, SPORTS THERAPIST, ELITE ATHLETE, FITNESS PROFESSIONAL, PE TEACHER.

Want to know more? Search **'#sport'** at bicton.ac.uk and duchy.ac.uk

Study Full-time

SPORT (SPORTS COACHING) DIPLOMA LEVEL 3

Where: Duchy College Stoke Climsland
Entry Requirements: Four or more GCSEs at grade 4 or above, including English and/or maths, science and/or PE. Or successful completion of a relevant Level 2 qualification.

This two-year diploma is all about you growing as a sports coach by effectively knowing how the body works and successfully planning and delivering your very own sport coaching/fitness session. Our industry experienced lecturers combine theory and practical learning allowing you to study a range of topics from fitness training and programming, to the skills, techniques and tactical awareness involved in sport. Alongside this you will develop essential teamwork and leadership skills. In addition, you will be carrying out your very own personal fitness plan as you progress through the course. In essence, you'll be developing all of the essential skills you need to start your journey towards a career in sport, health and fitness. We have an amazing partnership in place with Plymouth Argyle FC. Students on our sports programmes can opt in to study a football specific programme with high quality training delivered by Argyle staff twice a week and fixtures taking place most Wednesday afternoons, all of which go towards the evidence needed to complete your course.

Progression: University study such as our FdSc Sport, Health & Fitness with possible progression on to our BSc (Hons) Sport, Health & Exercise Science (top-up) at our Camborne campus. Employment in the industry as a fitness instructor or community coach.



SCAN HERE
with Zappar
to...



TAKE A VIRTUAL
TOUR OF WHERE
& WHAT YOU'LL
STUDY

VIEW
ACCOMMODATION
ON CAMPUS

HEAR FROM
OUR ALUMNI
JOSH CHALK
SPORTS PARTICIPATION
LEAD COACH
PLYMOUTH ARGYLE
COMMUNITY TRUST

VOCATIONAL ACADEMY



We offer courses for learners who may need some extra support or for those who simply want to spend some time developing core skills.

Our courses are designed to focus on developing skills that can be used in any vocational area and enable you to try out numerous career paths before committing to a specific vocational course.

The Vocational Academy's vision is to support you to be confident, resilient and work-ready.



Our industry partners & connections

CORNWALL CARE

PINETUM GARDENS

HOSPICE CARE

INTO BODMIN

HEADLAND HOTEL

LOST GARDENS OF HELIGAN

**Opportunity
to try dozens
of different
subjects**



**Supported internships
with our local partners**



SCAN HERE
with Zappar
to...



TAKE A VIRTUAL
TOUR OF WHERE
YOU WILL STUDY

LEARN MORE
ABOUT WHAT
YOU WILL STUDY

I want to become more... CONFIDENT, RESILIENT AND WORK-READY

Within the Vocational Academy team our vision is to support you to be CONFIDENT, RESILIENT AND WORK READY so that you are well-prepared to engage with the wider community.

Vocational Pathway

Take part in a range of vocational options to help you make an informed choice for your future vocational area, and develop vocational knowledge and study skills for a successful transition.

VOCATIONAL STUDIES STAGE 1

Where: Bicton College and Duchy College Stoke Climsland
Entry Requirements: Working at Entry Level 3 or above in English and maths.

This course is ideal if you are unsure of the subject you wish to pursue as a career. You will experience a range of vocational options to help you make that choice. The options on offer are specific to the campus you choose to study at. During the course you will study vocational and life skills around the areas of work that you have chosen to study. You will also build your teamwork skills, self-confidence and develop your English and maths.

Progression: Pathway 2 Employment (P2E) Stage 1.



Within the foundation learning team our vision is to support you to be INDEPENDENT, CONFIDENT AND RESILIENT so that you are well-prepared to engage with the wider community.

Works Pathway

This pathway develops your knowledge and skills to prepare you for the world of work before leaving college.

PATHWAY 2 EMPLOYMENT (P2E) STAGE 1 ENTRY LEVEL

Where: Bicton College and Duchy College Stoke Climsland
Entry Requirements: No formal qualifications are required for Foundation Level courses.

You will learn the skills, knowledge and behaviours to prepare you for the world of work. During these steps to becoming work ready you will set personal targets to ensure you reach the goals you need to enter the next stage in your career. You will get the opportunity to visit local employers and also follow a career plan to match your skills and interests with different jobs and careers and, where relevant, work with the P2E co-ordinator to find the right work placement for your supported internship at stage 2. Work experience opportunities will range from placements including our on-site shop and coffee shop, to placements within other college departments.

Progression: Pathway 2 Employment Stage 2 (Supported Internship).

Works Pathway

PATHWAY 2 EMPLOYMENT STAGE 2 (SUPPORTED INTERNSHIP) LEVEL 1

Where: Bicton College and Duchy College Stoke Climsland
Entry Requirements: Two or more GCSEs at grade 2 or above, or successful completion of Entry Level qualification.

Supported internships are a good way of preparing you for employment. What makes them different is that you do most of your learning at work and some in college. This means you can 'learn on the job'. A supported internship could be the right choice for you if you know you learn best by 'doing'.

Progression: Employment.



SCAN HERE
with Zappar
to...



TAKE A VIRTUAL
TOUR OF WHERE
& WHAT YOU'LL
STUDY

LEARN MORE
ABOUT WHAT
YOU WILL STUDY

START YOUR CAREER WITH AN APPRENTICESHIP

#1 FOR APPRENTICESHIPS IN CORNWALL AND DEVON

An apprenticeship is for anyone over the age of 16 and is the perfect option to allow you to start or keep earning at work, while receiving training and gaining a recognised qualification. It gives you a great mix of learning in a work setting and studying at college, allowing you to continue developing your skills.

A fair deal: Starting salary £4.30 per hour*.

Support: We will be there when you need us throughout your training.

Choice: We've got over 60 different pathways to choose from across the region.

Get hired: We will help you find an employer, alongside supporting your college and job applications.

We work with a range of organisations to develop industry relevant apprenticeship programmes, including:

- Synergy Farm Health
- Brian Etherington Meat Co.
- Heligan Gardens
- Riverford Farm Shop
- RSPCA
- Lynher Dairies Cheese Co.
- James Kittow Butcher & Grazier
- The Eden Project

If you are applying for an apprenticeship you need an employer who is willing to take you on as an apprentice. Please speak to our dedicated recruitment team to find out more.

0330 123 4785
apprenticeships@duchy.ac.uk
duchy.ac.uk/apprenticeships

* Minimum apprenticeship salary as of 01/04/21. This is reviewed annually.

We offer apprenticeships in:

Agriculture
Animal Care
Arborist
Engineering Operative
Equine Groom
Floristry
Horticulture/Landscape Operative
Land-based Service Engineer
Stockperson
Veterinary Nursing

We also offer the following Level 4 Apprenticeship:

Agricultural Business Management

A number of our apprenticeships are only suitable for those with some prior experience. Talk to our Apprenticeship Recruitment Team to explore your options today.



GRADUATE LOCALLY

WITH BICTON COLLEGE & DUCHY COLLEGE

There's never been a better time to gain a quality degree in the South West, with an incredible range of programmes provide you with real skills to start the career you want straight away. The diversity of our curriculum offers you the chance to study golf in Portugal, horticulture at The Eden Project or equitation training and behaviour in our dedicated equestrian centre. Our programme range is evolving and growing each year; please visit bicton.ac.uk or duchy.ac.uk for the latest listings.

Choose from the following areas:

Agriculture
Animal Management
Conservation & Countryside
Emergency Services
Equine Science
Golf Studies
Horticulture
Veterinary Nursing

SCAN HERE
with Zappar
to...



LIVE YOUR
BEST LIFE

Foundation degree awarding powers

In a major boost for learners and businesses in the South West, we have secured foundation degree awarding powers.

As the only FE college in the county to do this, we now have the authority to co-create bespoke higher level foundation degree courses with key employers efficiently and quickly to the requirements of each business, as well as being responsive to the workforce needs of the local and regional economy. We also work in partnership with a range of universities to award our HNDs, Foundation Degrees, Bachelors Degrees and Masters programmes.

UNIVERSITY OF
PLYMOUTH

PLYMOUTH
MARJON
UNIVERSITY



SUPPORTING YOU

We have a range of staff who will support you and help you achieve your goals.

Engagement and Progression Officers (EPOs) are available to support you with any concerns that you have or if you need any support.

- They can offer advice and guidance and help to find solutions to overcome any barriers you are facing
- Help you to progress with your studies and achieve your learning and career goals
- Support you with any concerns you may have
- They will always be available in the social space for you to talk to and will also arrange activities for students to take part in.

Personal and Professional Development (PPD)

You will take part in a range of activities that will help you develop personal and employability skills. They will focus on helping you to become a successful student and prepare for your future life and be an active part of society. There will also be lots of enrichment opportunities that you can take part in from trips and visits to visiting speakers. You can have your say in the activities we offer as well.

Health & Wellbeing

We offer a wide range of additional health and wellbeing opportunities for you to participate in around your study programme. Which activities you undertake will depend on which campus you are studying at. Please talk to your tutor about what is available.

Learning Centre and Study Support

Our Learning Centres have a range of staff to support you when using the resources, computers and software. You can also access workshops and request support sessions to

develop your study and academic skills whether you are on an introductory course or studying for a higher level qualification.

Computer access and access to online classrooms

- When you enrol with us you will be issued with a computer account and email. This will give you access to a range of software and resources which includes:
- the College's Wi-Fi
 - your course details and progress information
 - access to a wide range of software and resources to support your study
 - Online classrooms with Moodle and Teams
 - A range of online study resources and ebooks

Careers

Alongside our Engagement and Progression Officers, our team of Careers Officers are available all year round to provide impartial support and advice when help is needed with career choices, progression to university and other training, education or employment opportunities.

Special Educational Needs and Disability (SEND) Provision

Our vision is to develop independent, confident and resilient learners who are well-prepared to engage with the wider community. Please see our website for our SEND Provision Statement which includes further information and details should you wish to talk to someone in person: cornwall.ac.uk/send-statement

Safeguarding

We set out to provide a safe and supportive learning and working environment for all our students, staff and visitors. The Cornwall College Group has a duty to safeguard all

learners, staff and visitors. We also have a duty to prevent extremism and radicalisation. Prevent is about safeguarding our students to keep them both safe and within the law. Full details and our policies can be found on our website: cornwall.ac.uk/safeguarding

Equality, Diversity and Inclusion

The Cornwall College Group is committed to equal opportunities for all and recognises that valuing and embracing diversity is the key to providing high quality teaching and learning. We take pride in serving the local communities of Cornwall and are fully committed to promoting equality of opportunity, access, dignity and fairness.

Funding support

Funding support is available to help you access your college education. This is means tested and you can find the most up-to-date information on the College website: cornwall.ac.uk/financial-support

Accommodation

If you do not live within reasonable travelling distance of the College you may wish to consider seeking accommodation nearby. For students at Bicton College and Duchy College Stoke Climsland there are full-board residential places available. Residential Bursaries are available for eligible students.

Students' Union

We are incredibly proud of our Students' Union, which exists to represent your voice at every level in the College and to make sure you have a fantastic time with us. From freshers' fairs to political hustings; charity events to parties; volunteer work to running campaigns, you can get involved in a huge range of activities and have the power to determine what it's doing.

TRANSPORT

GETTING YOU TO COLLEGE

The College operates a network of daily transport into all of its campuses, with prices varying depending on your location and financial status; bursaries are available. For a full list of routes, bursary information and transport application forms, please visit the relevant website: bicton.ac.uk/transport or duchy.ac.uk/transport

ACCOMMODATION

LOVE WHERE YOU LIVE

Bicton College and Duchy College Stoke Climsland

We want to help you have the best college experience possible and we know that where you live is a big part of that, so we are here to help every step of the way. We offer a number of residential options for you depending on your timetable, so you could stay on campus for five, four or three nights.

Bursary Assistance Available

Residential Bursary 16 – 18 years

If you are studying a further education course, your daily return travelling time would be more than two hours and your household income is less than £40,000, you may be eligible for assistance with accommodation costs with a Residential Bursary.

For accommodation prices, bursary forms and accommodation application forms please visit the relevant website:

bicton.ac.uk/accommodation

duchy.ac.uk/accommodation

Duchy College Rosewarne

Although there are no specific halls of residence at Duchy College Rosewarne, we have developed an established network of local landlords who provide accommodation to suit all needs. For more information on the types of accommodation available, prices and moving tips please visit duchy.ac.uk/accommodation



COURSE INDEX

		BICTON	ROSEWARNE	STOKE CLIMSLAND
AGRICULTURE	PAGE			
Land-based Studies (Agriculture) Diploma Level 1	18	✓		✓
Agriculture Technical Certificate Level 2	18	✓		✓
Agriculture Diploma Level 3	18	✓		✓
General Farm Worker Apprenticeship Level 2	18	✓	✓	✓
Livestock Unit Technician Apprenticeship Level 3	19	✓	✓	✓
Crop Technician Apprenticeship Level 3	19		✓	
ANIMAL MANAGEMENT				
Animal Care Diploma Level 1	24	✓	✓	✓
Animal Care Certificate Level 2	24	✓	✓	✓
Animal Management Diploma Level 3	24	✓	✓	✓
Animal Care & Welfare Assistant Apprenticeship Level 2	24	✓	✓	✓
ARBORICULTURE				
Land-based Studies (Countryside, Conservation & Horticulture) Diploma Level 1	42	✓		
Forestry & Arboriculture Certificate Level 2	42	✓		
Forestry & Arboriculture Diploma Level 3	42	✓		
Arborist Apprenticeship Standard (Tree Surgery) Level 2	42	✓		
COUNTRYSIDE & CONSERVATION				
Land-based Studies (Countryside, Conservation & Horticulture) Diploma Level 1	20	✓	✓	
Land & Wildlife Diploma Level 2	20	✓	✓	
Land & Wildlife Diploma Level 3	20	✓	✓	
Conservation & Environmental Sustainability Level 3	20		✓	
EQUINE MANAGEMENT				
Horse Care Level 1	34	✓		✓
Horse Care Level 2	34	✓		✓
Equine Management Level 3	34	✓		✓
Equine Groom Apprenticeship Level 2	35	✓		✓
Senior Equine Groom Apprenticeship Level 3	35	✓		✓
FLORISTRY				
Floristry Certificate Level 2	43	✓	✓	
Floristry Advanced Technical Diploma Level 3	43	✓	✓	
FOUNDATION LEARNING	PAGE			
Skills Entry Level	38	✓		✓
GAMEKEEPING	PAGE			
Gamekeeping & Conservation Diploma Level 3	21			✓

HORTICULTURE		BICTON	ROSEWARNE	STOKE CLIMSLAND
Land-based Studies (Countryside, Conservation & Horticulture) Diploma Level 1	44	✓	✓	
Horticulture Certificate Level 2	44	✓	✓	
Horticulture Diploma Level 3	44	✓	✓	
Horticulture & Landscape Operative Apprenticeship Level 2	45	✓	✓	
Horticulture & Landscape Supervisor Apprenticeship Level 3	45	✓	✓	
LAND-BASED ENGINEERING				
Land-based Engineering Certificate Level 2	30	✓		✓
Land-based Engineering Diploma Level 3	30	✓		
Land-based Engineer Apprenticeship Level 2	30	✓		✓
Land-based Engineer Technician Apprenticeship Level 3	30	✓		✓
MILITARY & PROTECTIVE SERVICES				
Military & Protective Services Diploma Level 2	48	✓		✓
Military & Protective Services Diploma Level 3	48	✓		✓
OUTDOOR ADVENTURE				
Outdoor Adventure Education Diploma Level 2	52			✓
Outdoor Adventure Education Diploma Level 3	52			✓
PLANT OPERATIONS & GROUNDWORKS				
Construction Multi Skills Diploma with Plant Operations Options Level 1	31			✓
Plant Operations - Groundworks Certificate Level 2	31	✓		✓
Construction Plant Operative Apprenticeship Level 2	31			✓
Construction Driver Training Level 3	31			✓
SPORT				
Sport (Sports Coaching) Diploma Level 2	53			✓
Sport (Sports Coaching) Diploma Level 3	53			✓
VETERINARY NURSING				
Animal Nursing Assistants Certificate Level 2	25	✓	✓	
Veterinary Nursing Diploma Level 3	25	✓	✓	
VOCATIONAL ACADEMY				
Vocational Stage 1	56	✓		✓
Pathway 2 Employment Stage 1 (Entry Level)	57	✓		✓
Pathway 2 Employment Stage 2 (Supported Internship) Level 1	57	✓		✓
ZOOLOGY				
Animal Management Diploma Level 3	26		✓	✓

FOR OFFICE USE ONLY

App ref:

Student ref:

APPLICATION FORM

ACADEMIC YEAR 2022/2023

Please complete all sections of this form in CAPITAL LETTERS



PERSONAL DETAILS

First name:	Legal Last Name:
Address:	Date of birth:
	Age:
	Telephone number:
Postcode:	Mobile number:
Email:	
Parent or guardian's name and email address (if under 19):	
Current school:	

YOUR CHOICE OF MAIN PROGRAMME

Main programme:	Main programme:
Main programme:	Main programme:

There will be additional elements to your study with us as a full-time student, including maths, English (if applicable) and employability skills.

My career aim is: (e.g. future plans)

YOUR EDUCATION Please write your grades in the appropriate column (Predicted Grade or Grade Already Achieved)

Subject	Predicted Grade	Grade Already Achieved	Subject	Predicted Grade	Grade Already Achieved	Subject	Predicted Grade	Grade Already Achieved

OTHER PERSONAL INFORMATION

Hobbies and interests:

Work experience and employment:

Other achievements and certificates: e.g. Duke of Edinburgh's Award, Youth Achievement, First Aid

Responsibilities and positive contributions made:

HEALTH

Has your education been affected by health problems? If so, please give brief details:

LEARNING NEEDS

Do you need any extra support? This might include help with visual impairment, hearing, mobility difficulties or dyslexia. Please give brief details:

Do you need any extra support with reading, writing, number work? Please give brief details:

I understand that the information provided on this form will be used to assess my suitability for the main programme I have applied for, provide advice and guidance in relation to my stated aspirations and to contact me to follow up on my application or any advice given. If my application is successful I understand that the information will be used to pre-populate my enrolment form.

Signature:

Date

By signing this form I hereby consent to the processing of my personal data in line with the Cornwall College Student Privacy Notice available at [cornwall.ac.uk/governance/your-information/](https://www.cornwall.ac.uk/governance/your-information/)

RETURN YOUR COMPLETED FORM TO ADMISSIONS AT:

The Cornwall College Group, Admissions, Penhaligon Building, Trevenson Road, Pool, Redruth, Cornwall TR15 3RD

Alternatively you can return the form in person to the reception desk at the campus where you want to study.

If you have any questions about the course(s) you would like to study please call 0330 123 2523 or email enquiries@cornwall.ac.uk, you can also find more information about studying with us at [cornwall.ac.uk](https://www.cornwall.ac.uk).

THE CORNWALL COLLEGE GROUP

THE CAREER COLLEGE FOR THE SOUTH WEST

Enquiries for all courses

0330 123 2523
enquiries@cornwall.ac.uk
[cornwall.ac.uk](https://www.cornwall.ac.uk)

Bicton College

East Budleigh
Budleigh Salterton
Devon EX9 7BH
0330 123 4782
customer.services@bicton.ac.uk

Cornwall College Camborne

Trevenson Road
Pool
Redruth
Cornwall TR14 0EQ
0330 123 2523
enquiries@cornwall.ac.uk

Cornwall College Newquay

Wildflower Lane
Trenance Gardens
Newquay
Cornwall TR7 2LZ
0330 123 2523
newquay.enquiries@cornwall.ac.uk

Cornwall College St Austell

Tregonissey Road
St Austell
Cornwall PL25 4DJ
0330 123 2523
enquiries@cornwall.ac.uk

Duchy College Rosewarne

Camborne
Cornwall TR14 0AB
0330 123 4784
rosewarne.enquiries@duchy.ac.uk

Duchy College Stoke Climsland

Stoke Climsland
Callington
Cornwall PL17 8PB
0330 123 4784
stoke.enquiries@duchy.ac.uk

Falmouth Marine School

Killigrew Street
Falmouth
Cornwall TR11 3QS
0330 123 4783
[falenquiries@cornwall.ac.uk](mailto:fal enquiries@cornwall.ac.uk)

Engineering Skills Centre

87-89 Sisna Park Road
Plymouth
PL6 7AE

OPEN EVENTS

Don't miss your chance to get all the information you need to make a decision about your future.

- See world-class facilities
- Explore career pathways
- Discover more about our unique field trips
- Hear from expert lecturers
- Tour the campuses
- Get advice on filling in your application form
- Receive transport and finance information
- Apply for apprenticeship jobs

Bicton College

Sat 20 Nov 10am – 12pm

Sat 5 Feb 10am – 12pm

Sat 26 Mar 10am – 12pm

Duchy College Stoke Climsland & Rosewarne campuses

Sat 27 Nov 10am – 12pm

Sat 29 Jan 10am – 12pm

Sat 19 Mar 10am – 12pm

For more info visit:

bicton.ac.uk/events

duchy.ac.uk/events

Enquiries for all
Bicton College courses:

0330 123 4782

customer.services@bicton.ac.uk

bicton.ac.uk



FUN DAYS

BICTON LAMBING SUNDAY

Sun 20 Mar

DUCHY COLLEGE STOKE CLIMSLAND FAMILY FUN DAY

Sun 26 June

DUCHY COLLEGE ROSEWARNE FAMILY FUN DAY

Sun 19 Jun

TASTER DAYS

We offer a range of taster days throughout the year at all of our campuses. Please see our website for more details.

bicton.ac.uk/events

duchy.ac.uk/events

Please visit our website before attending one of our events to check if it is taking place virtually or in person. We will adhere to the latest government guidelines at each event. The safety of our students, staff and visitors is our top priority.

Enquiries for all
Duchy College courses:

0330 123 4784

enquiries@duchy.ac.uk

duchy.ac.uk



Sustainably printed
Please recycle